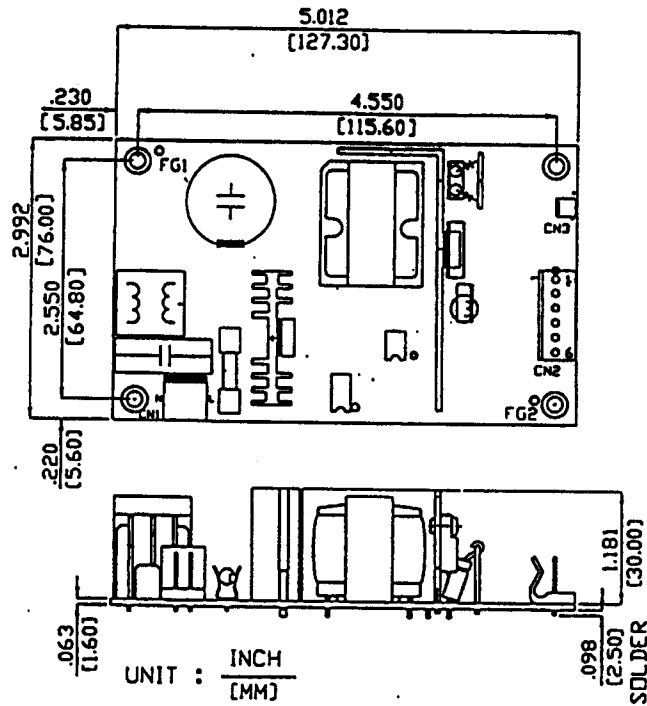


REVISIONS			
LTR	DESCRIPTION	DATE	APPR
A	RELEASED		



MODEL	PIN 1	PIN 2	PIN 3	PIN 4	PIN 5	PIN 6
OS40-105	NC	+5V	+5V	RTN	RTN	NC
OS40-112	NC	+12V	+12V	RTN	RTN	NC
OS40-115	NC	+15V	+15V	RTN	RTN	NC
OS40-115A	NC	+15V	+15V	RTN	RTN	NC
OS40-124	NC	+24V	+24V	RTN	RTN	NC
OS40-201	+12V	+5V	+5V	RTN	RTN	NC
OS40-202	+24V	+5V	+5V	RTN	RTN	NC
OS40-203	+12V	RTN	RTN	+5V	+5V	
OS40-301	+12V	+5V	+5V	RTN	RTN	-5V
OS40-302	+12V	+5V	+5V	RTN	RTN	-12V
OS40-303	+12V	+5V	+5V	RTN	RTN	-12V
OS40-304	+15V	+5V	+5V	RTN	RTN	+15V

NOTES:

- 3 PIN 1. AC INPUT CONNECTOR: MOLEX P/N 09-652038 OR EQUIVALENT.  
 6 PIN 2. DC OUTPUT CONNECTOR: MOLEX P/N 09-652068 OR EQUIVALENT.

Mate's with WM 2101 -  
 WM 2104 -  
 Contacts WM 2300

DRAWN BY	ELPAC POWER SYSTEMS IRVINE, CALIFORNIA		
CHECKED BY	TITLE POWER SUPPLY		
APPROVED BY	SIZE A	DOCUMENT NUMBER OS40-XXX	REV. A
APPROVED BY	SCALE NONE	SHEET 1 OF 1	