

6

5

4

3

2

1

APPROVED: \_\_\_\_\_  
DATE: \_\_\_\_\_ TITLE: \_\_\_\_\_

| Rev | AWO # | Description | Date    | Appr |
|-----|-------|-------------|---------|------|
| -   |       | RELEASED    | 9/18/13 |      |

D

D

C

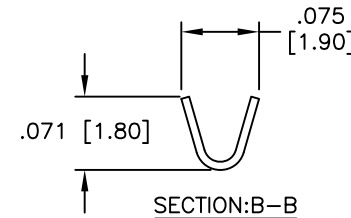
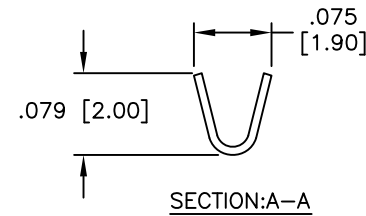
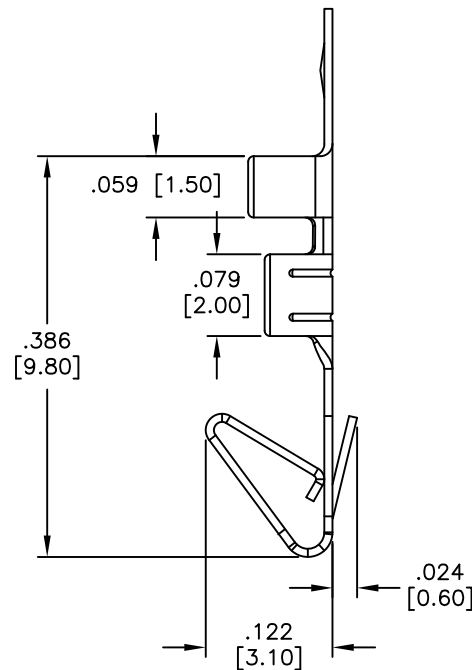
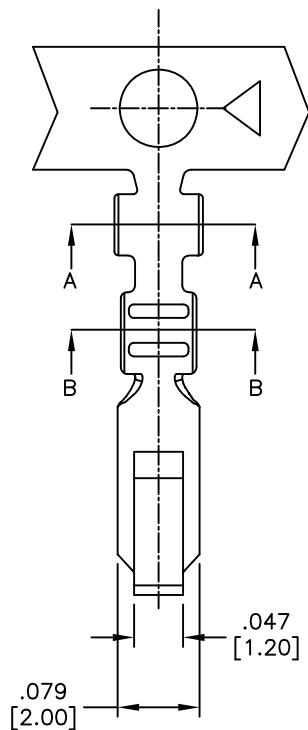
C

B

B

A

A



**SPECIFICATIONS:**

Material:  
Contact: Brass  
Plating:  
Gold flash over Nickel underplate overall

Electrical:  
Wire range: 22-28 AWG  
Voltage rating: 250V AC,DC  
Current rating: 2.5 Amps max  
Contact resistance: 20 mohms max  
Insulation resistance: 1000 mohms min  
Dielectric withstanding voltage: 1,000 VAC for 1 minute  
Temperature Rating:

Operating temperature: -25°C to +85°C

Packaging:  
B = 1,000 pieces loose cut  
R = 10,000 pieces on reel

Environmental:  
Lead free, RoHS compliant



|                                                                                             |        |       |        |
|---------------------------------------------------------------------------------------------|--------|-------|--------|
| UNLESS OTHERWISE SPECIFIED<br>ALL DIMENSIONS ARE INCHES [MM]<br>TOLERANCES: EXCEPT AS NOTED |        |       |        |
| INCHES                                                                                      |        | HOLES |        |
| .X                                                                                          | ± .10  | ∅.X   | ± .10  |
| .XX                                                                                         | ± .020 | ∅.XX  | ± .015 |
| .XXX                                                                                        | ± .015 | ∅.XXX | ± .010 |

**ADAM TECH**

909 Rahway Avenue, Union, NJ 07083  
Phone: 908-687-5000 Fax: 908-687-5710

| APPROVALS |    | DATE    |
|-----------|----|---------|
| DRAWN     | AY | 9/18/13 |
| CHECKED   | YC | 9/18/13 |
| APPROVED  |    |         |

|                               |                              |              |
|-------------------------------|------------------------------|--------------|
| TITLE<br><b>CRIMP CONTACT</b> |                              |              |
| SIZE<br><b>X</b>              | PART NO.<br><b>MTS-C-X-G</b> | REV.<br>-    |
| REF: S00016T                  | SCALE: NTS                   | SHEET 1 OF 1 |

6

5

4

3

2

1