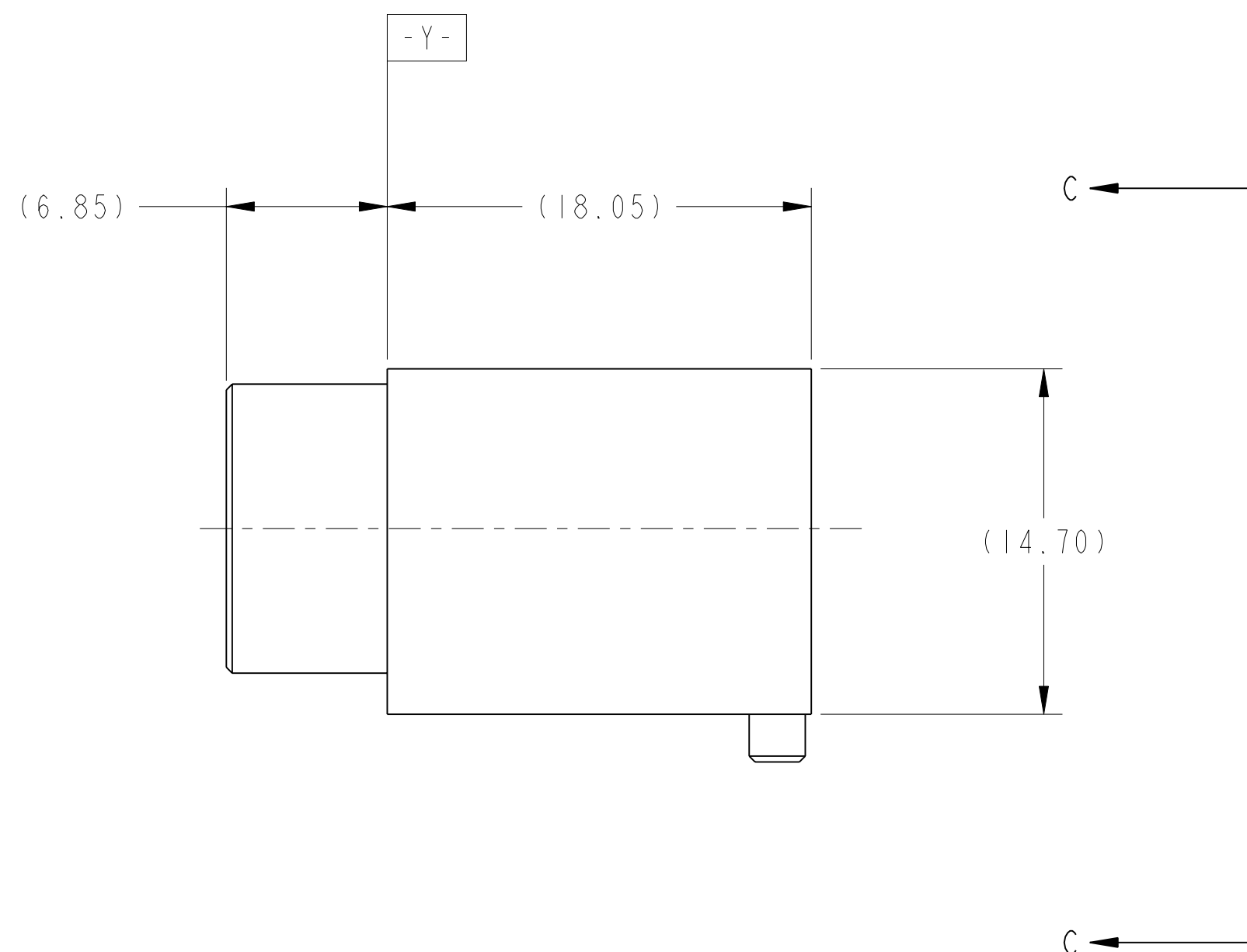
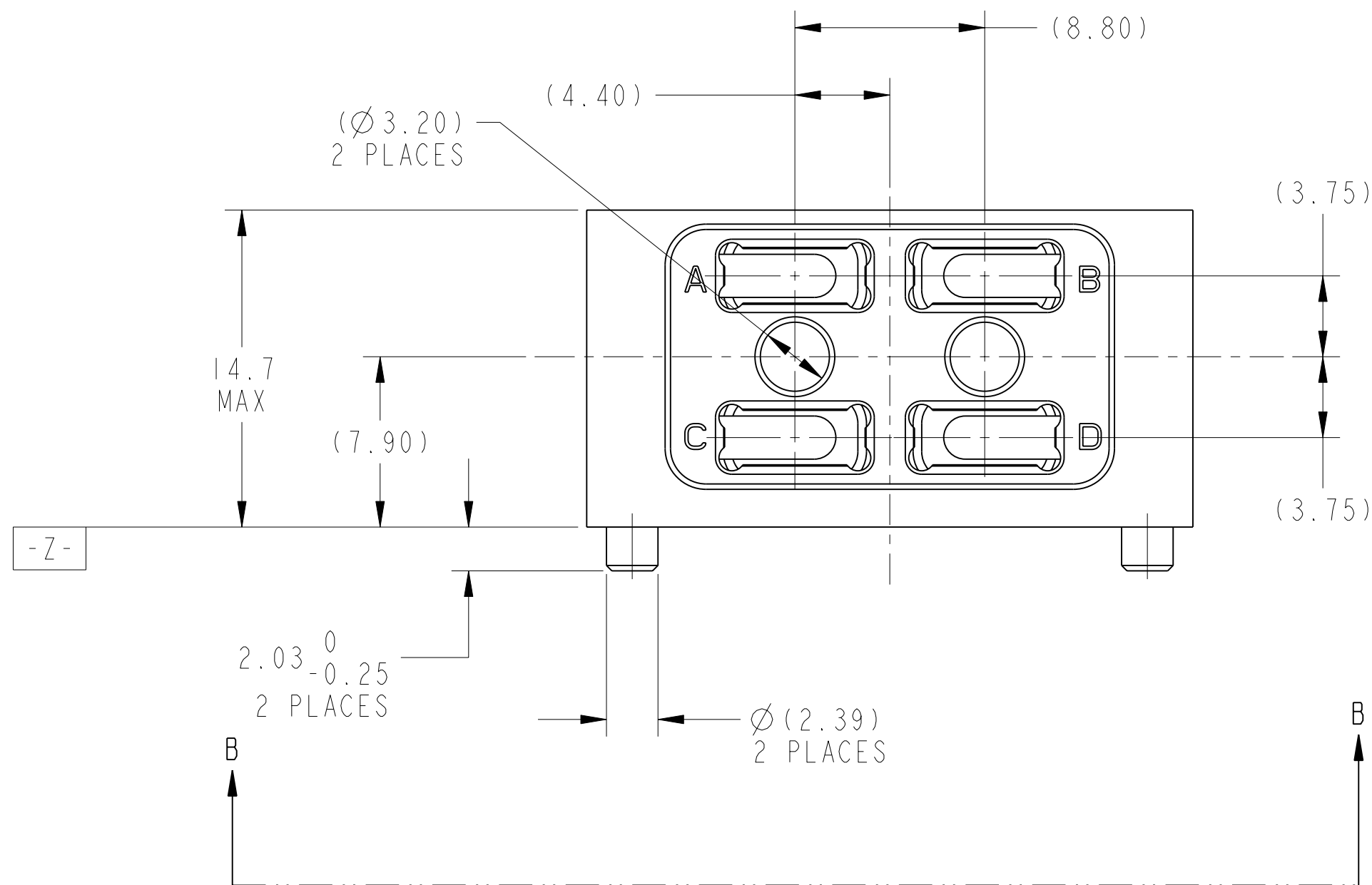
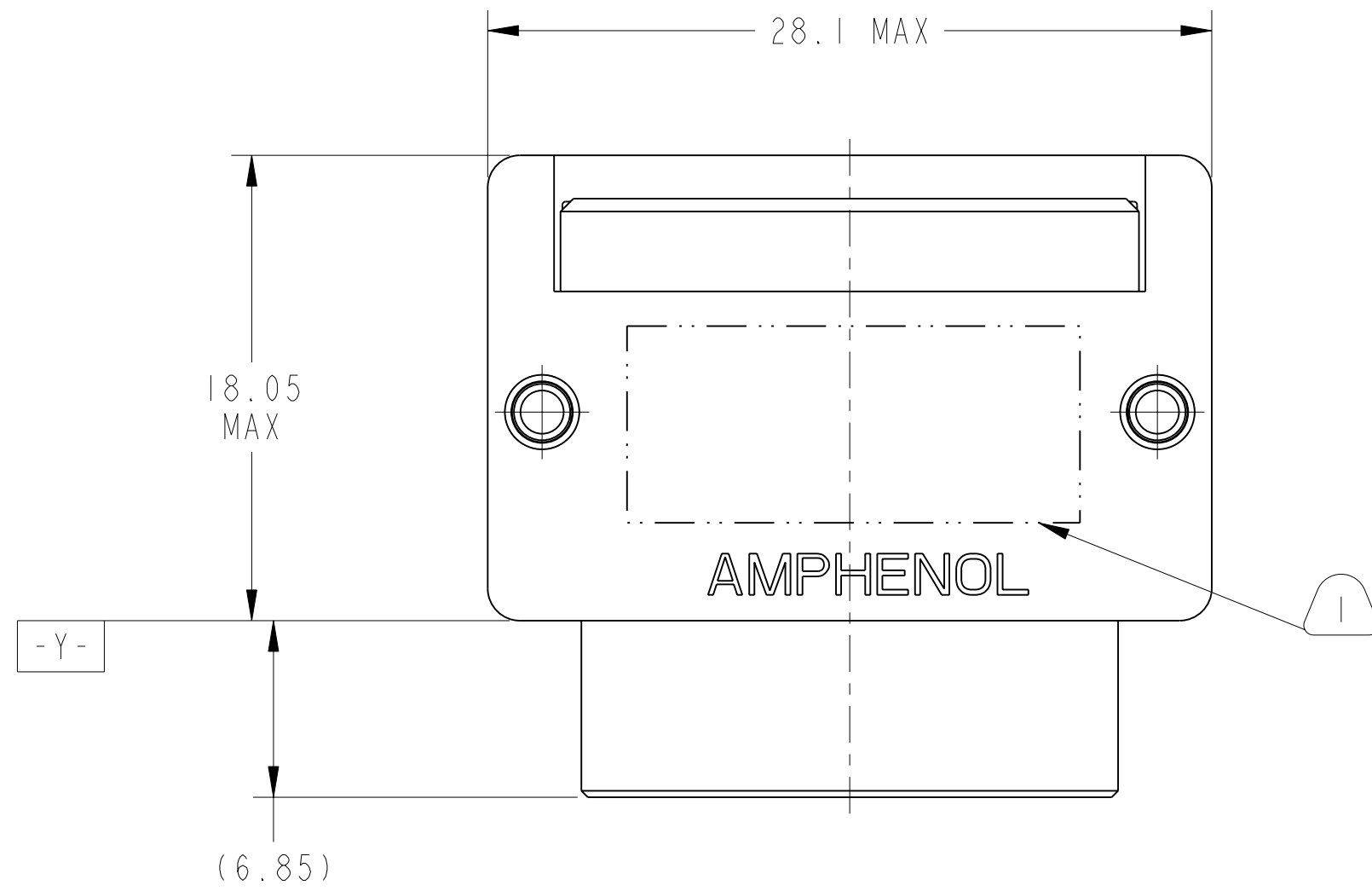


REV. PA1	SHEET 1 OF 3	DOCUMENT NO. 10-504637-010
REVISIONS		
LTR	DESCRIPTION	DATE
PA1	INITIAL RELEASE	9/25/17



METRIC DRAWING

SEE SHEET 2

SCALE 4.000

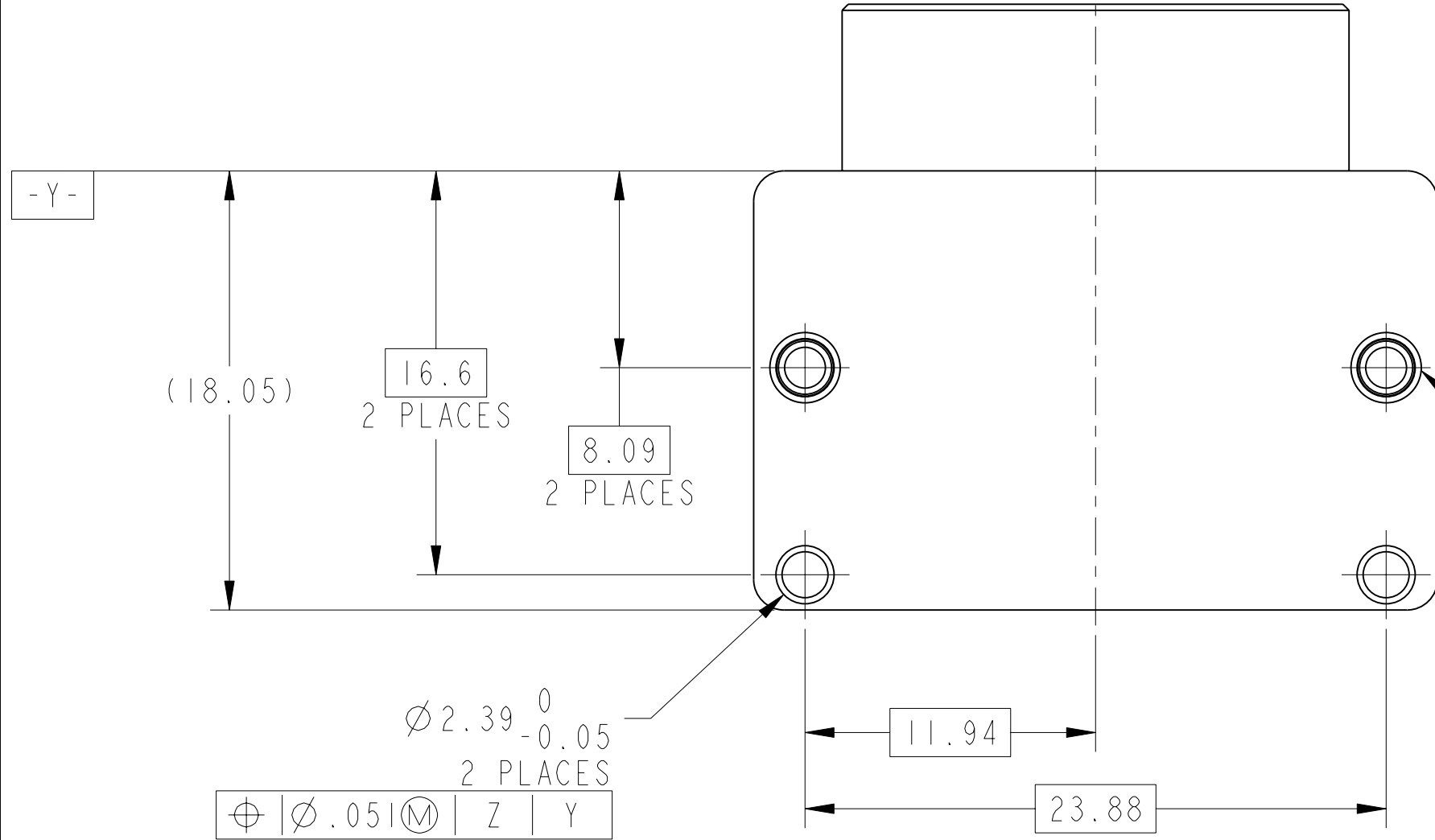
NOTES:

THE USE OF THIS DOCUMENT IS UNLIMITED. HOWEVER, DOCUMENTS REFERENCED HEREON MAY CONTAIN LIMITED RIGHTS DATA.

N/A	PRO/ENGINEER INFORMATION
N/A	Pro/e Model Used: 10-504637-010.DWG.ASSEM
NEXT ASSEMBLY	Drawing Name: 10-504637-010

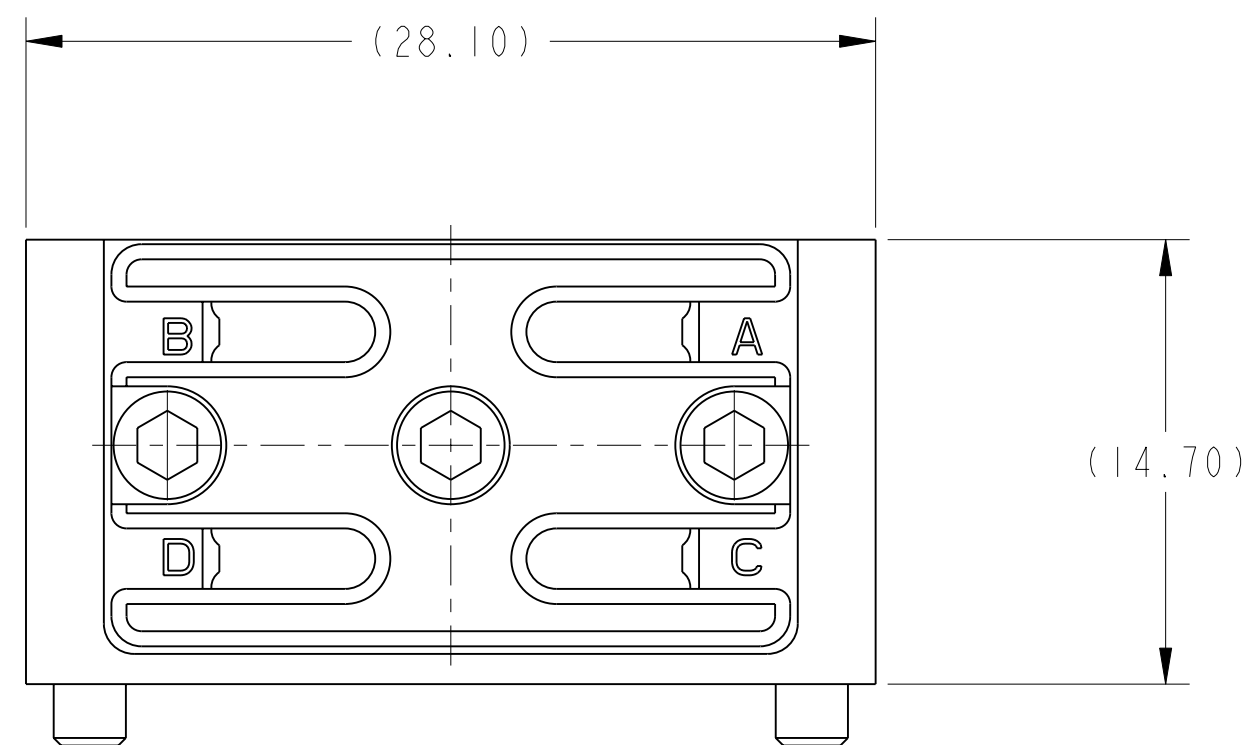
UNLESS OTHERWISE SPECIFIED		SPECIFICATIONS		POS	QTY	PART NUMBER	DESCRIPTION	NOTE
LINEAR DIMENSIONS ARE IN MILLIMETERS TOLERANCES: .XXXX = ±NA ANGLES= ±2° .XXX = ±NA .XX = ±.13 .X = ±.25		MATERIAL SPEC. NONE		APPROVALS		DATE	PARTS LIST AMPHENOL CORPORATION 40-60 DELAWARE AVENUE SIDNEY, N.Y. 13838 CONNECTOR, FIBER OPTIC, MODULE, 4 MT SPECIAL (VITA 66.1 ENVELOPE)	U
DIM. & TOL. PER ASME Y14.5M; DRM PER MIL-DTL-31000; OTHER Amphenol Sids. PER 9-3800		PROCESS SPEC. 9-3856-5 9-3895		PREPARED BY R. CHAPMAN	ENGINEER IN CHARGE E. HICKEY	25-Sep-17		
LEGENDS: =FLAG NOTE CALL OUT REFERENCE ONLY		THIRD ANGLE PROJECTION		DESIGN MANAGER R. SELFRIDGE	DESIGN ACTIVITY GROUP BLP			
				SIZE C		CAGE CODE 77820	DOCUMENT NO. 10-504637-010	REV. PA1
				SCALE: 3.0		REF: 10-504637-004	SHEET 1 OF 3	

CL OF CONNECTOR

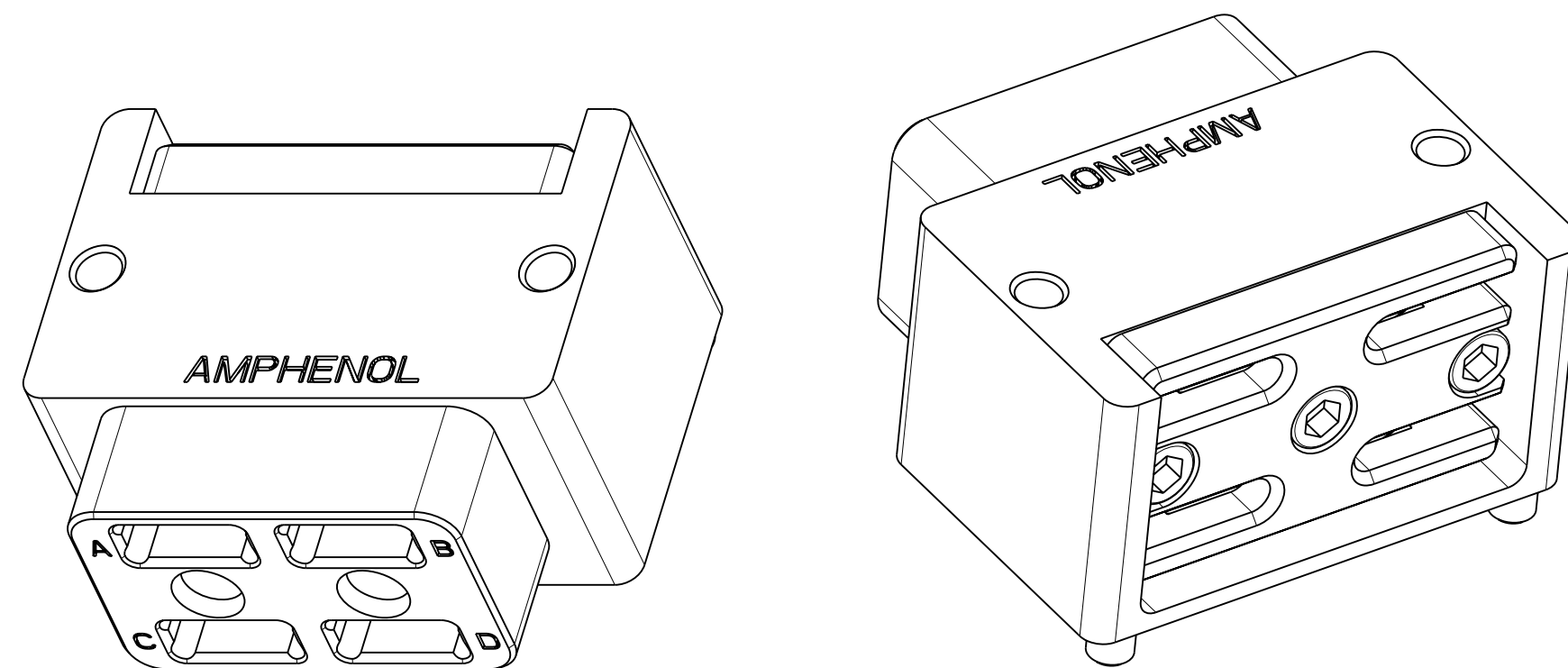


VIEW AT B

.086-56UNC-2B LOCKING
 HELICAL INSERT 2 PLACES
 $\varnothing \varnothing .13(M) \mid Z \mid Y$



VIEW AT C



SCALE 3.000

5. RETAINER SCREWS TO BE TIGHTENED TO A TORQUE OF 2 -3 IN-LBS. RETAINER SHOULD BE BOTTOMED ON CONNECTOR BODY.
4. INSERT CAVITIES ARE FOR A FIBER OPTIC MT FERRULE PER IEC 61754-5 MT FERRULES, PIN CLAMP ASSEMBLIES AND ASSOCIATED RIBBON CABLE ARE NOT PART OF THIS ASSEMBLY.
3. FOR CONNECTOR INSTALLATION ILLUSTRATION SEE SHEET 3.
2. FOR MATING BACKPLANE CONNECTOR ASSEMBLY, SEE DRAWING 10-504639-008.
1. BLACK INK STAMP 77820, PART NUMBER AND DATE CODE ON INDICATED SURFACE PER 9-3856-5. DATE CODE PER 9-3895. CHARACTERS TO BE $1.6 \pm .51$ ($.062 \pm .005$ INCH). HIGH. ADDITIONAL INFORMATION MAY BE REQUESTED BY PURCHASE ORDER. STAMP ING CAN BE ON BOTH SIDES OF PART.

MATERIALS AND FINISHES

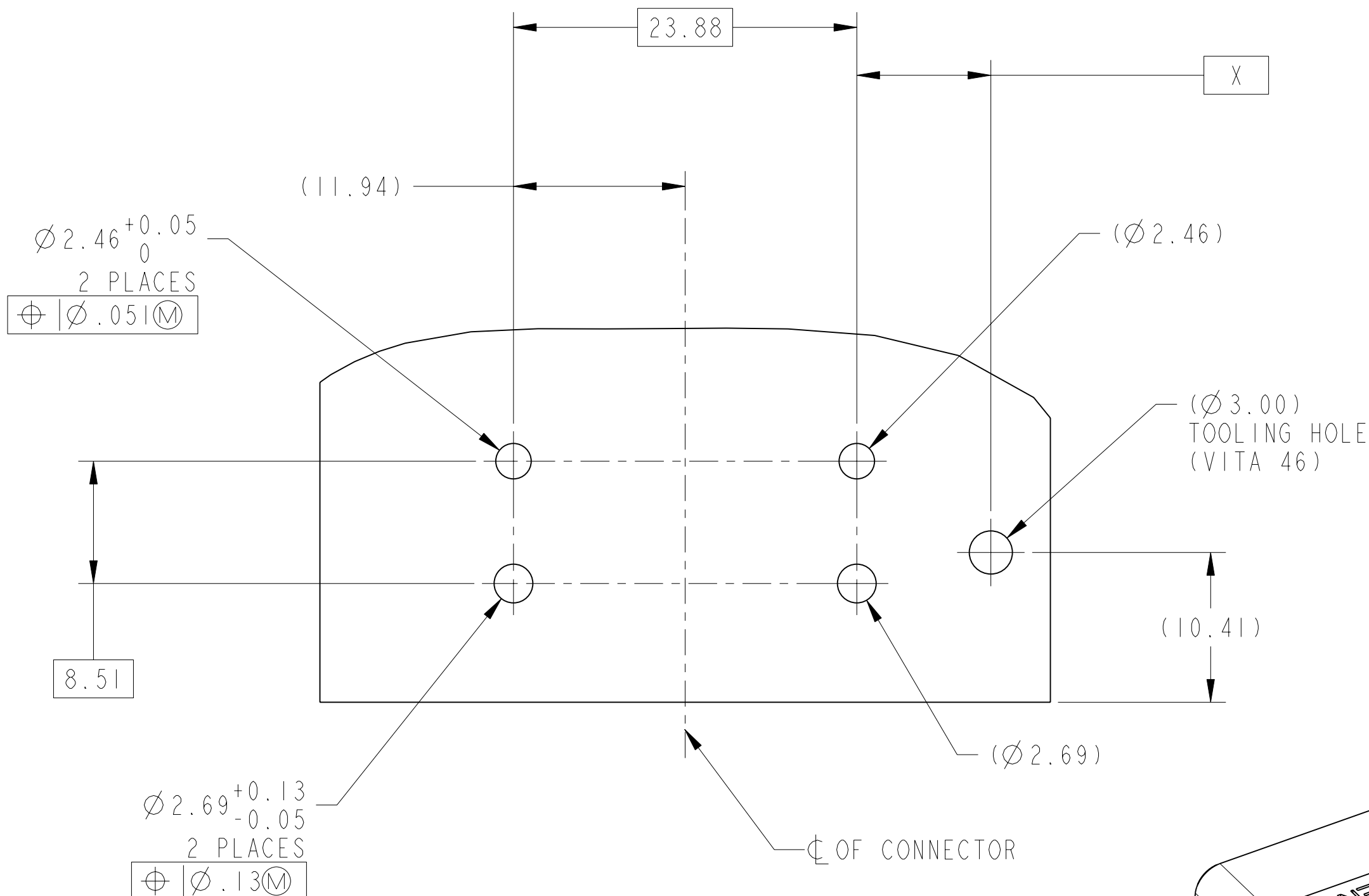
COMPONENT	MATERIAL/ FINISH
MAIN BODY	BODY - MATERIAL - ALUM. ALLOY PER AMS 4150 FINISH - CHROMATE TREATMENT PER MIL-C-5541, CL 3 HELICAL INSERTS - STAINLESS STEEL 304 SERIES PASSIVATED
MT RETAINER	BODY - MATERIAL - ALUM. ALLOY PER AMS 4150 FINISH - CHROMATE TREATMENT PER MIL-C-5541, CL 3 SCREW - STAINLESS STEEL 300 SERIES PASSIVATED

THE USE OF THIS DOCUMENT IS UNLIMITED.
 HOWEVER, DOCUMENTS REFERENCED HEREON
 MAY CONTAIN LIMITED RIGHTS DATA.

SIZE C	CAGE CODE 77820	DOCUMENT NO. 10-504637-010	REV. PA1
SCALE: 3.0	REF. 10-504637-004	SHEET 2 OF 3	

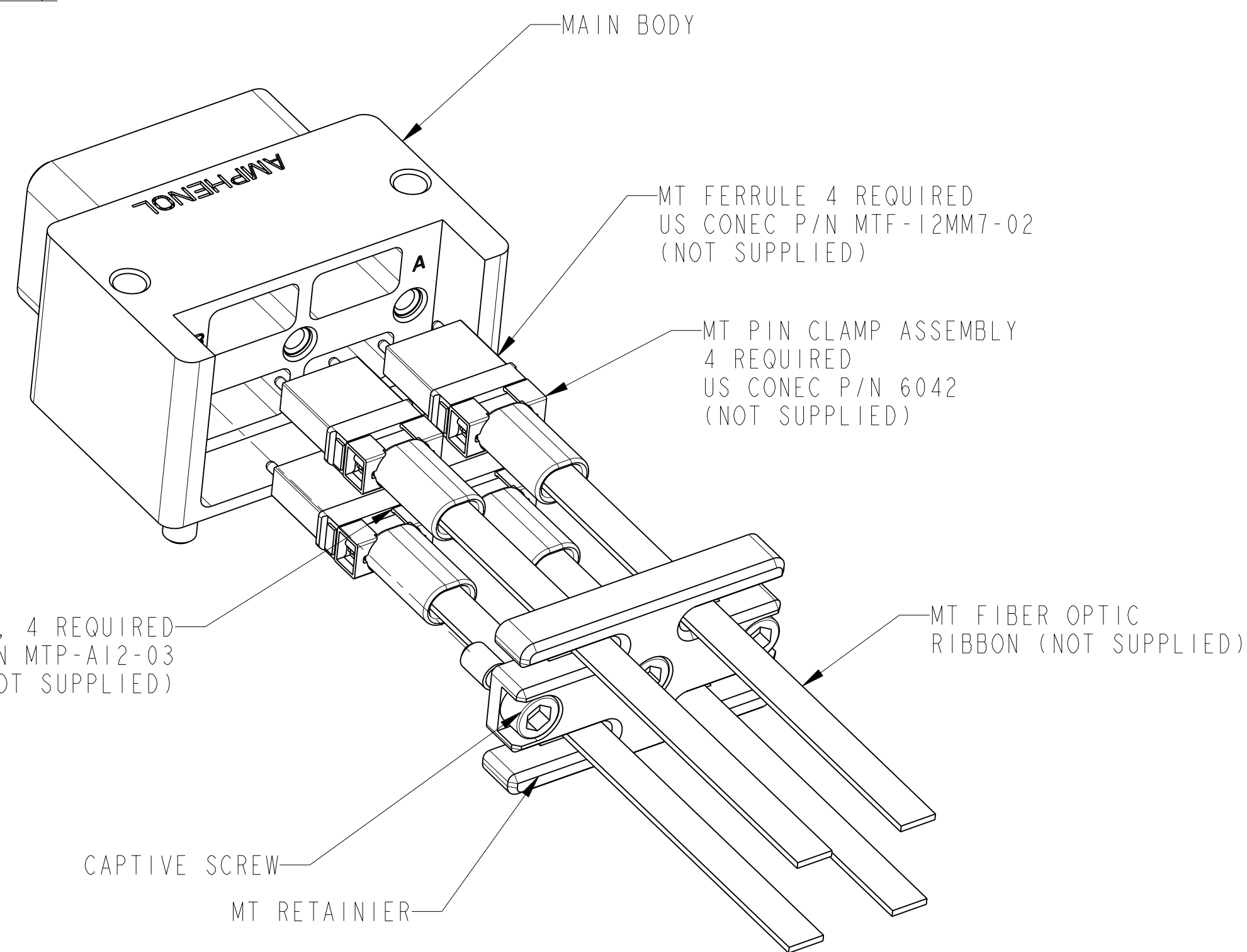
CONNECTOR LOCATION ON MODULE PCB

POSITION	DIM "X" MM (INCH)
P2	53.73
P3	96.55
P4	125.35
P5	154.15
P6	182.95



SUGGESTED MODULE PCB INTERFACE DIMENSIONS

SCALE 3.000



REAR EXPLODED ASSEMBLY VIEW

SCALE 3.000

THE USE OF THIS DOCUMENT IS UNLIMITED. HOWEVER, DOCUMENTS REFERENCED HEREON MAY CONTAIN LIMITED RIGHTS DATA.

SIZE	CAGE CODE	DOCUMENT NO.	REV.
C	77820	10-504637-010	PA1
SCALE: 3.0	REF. 10-504637-004	SHEET 3 OF 3	