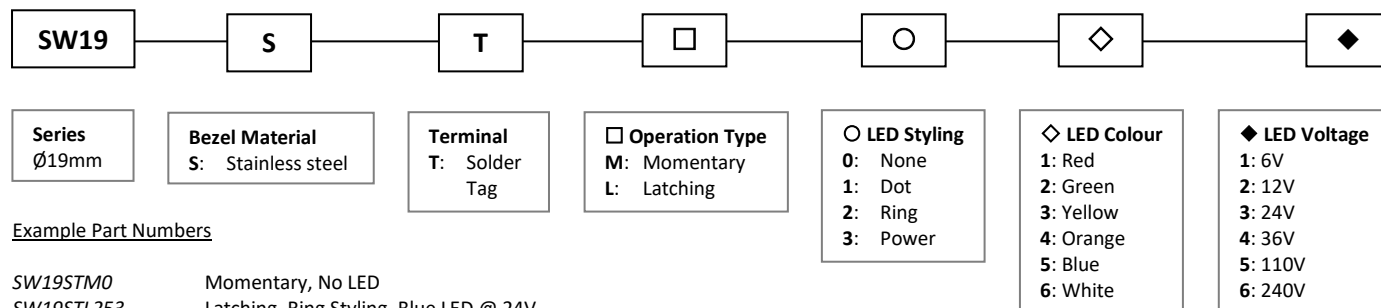
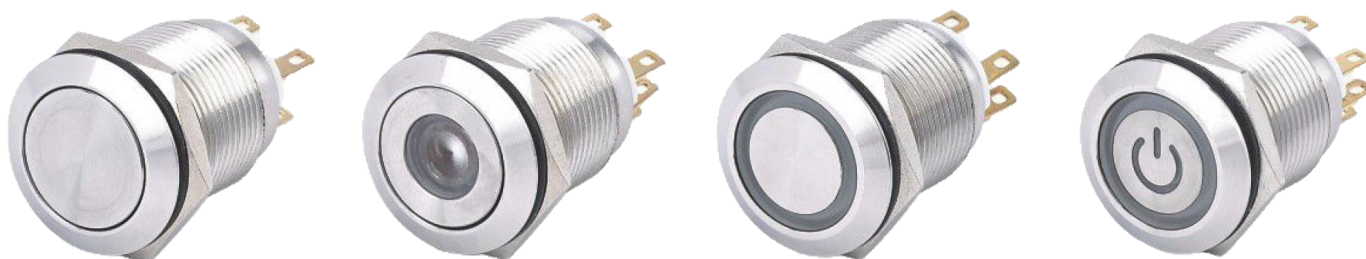


Product Configuration



Example Part Numbers

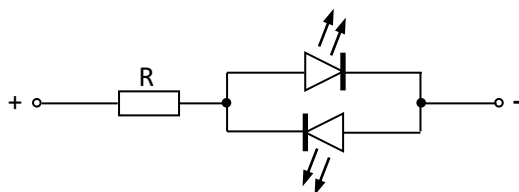
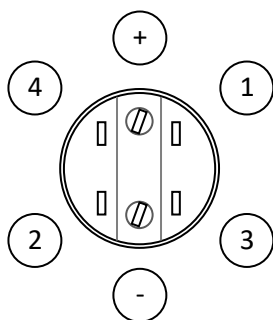
SW19STM0 Momentary, No LED
 SW19STL253 Latching, Ring Styling, Blue LED @ 24V



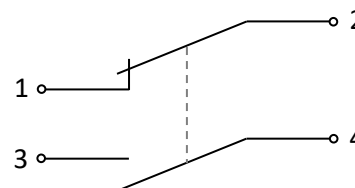
Specifications

Voltage / Current Rating	250V / 5A (AC)	Ingress Protection	IP 65
Contact Resistance	≤ 50mΩ	Impact Rating	IK 10
Insulation Resistance	≥ 1,000MΩ	Operating Force	3 – 5 N
Dielectric Strength	1,780V (AC)	Operating Travel	3 mm
Mechanical Life	≥ 1,000,000 cycles	Panel Thickness Range	1 – 10 mm
Electrical Life (Full Load)	≥ 50,000 cycles	Torque	5 – 14 N
Contact Configuration	1 NC, 1 NO	Contact Material	Silver alloy
Soldering	320°C, < 2 seconds	Operating Temp. Range	-40 to +80°C

Contact Configuration / Circuit Diagram



The LED illumination is polarity insensitive



Outline Dimensions (mm) - Not to scale

