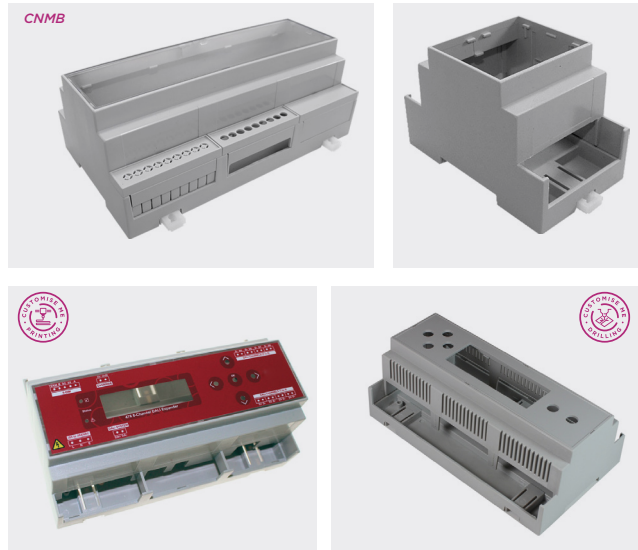


DIN Rail modular enclosures

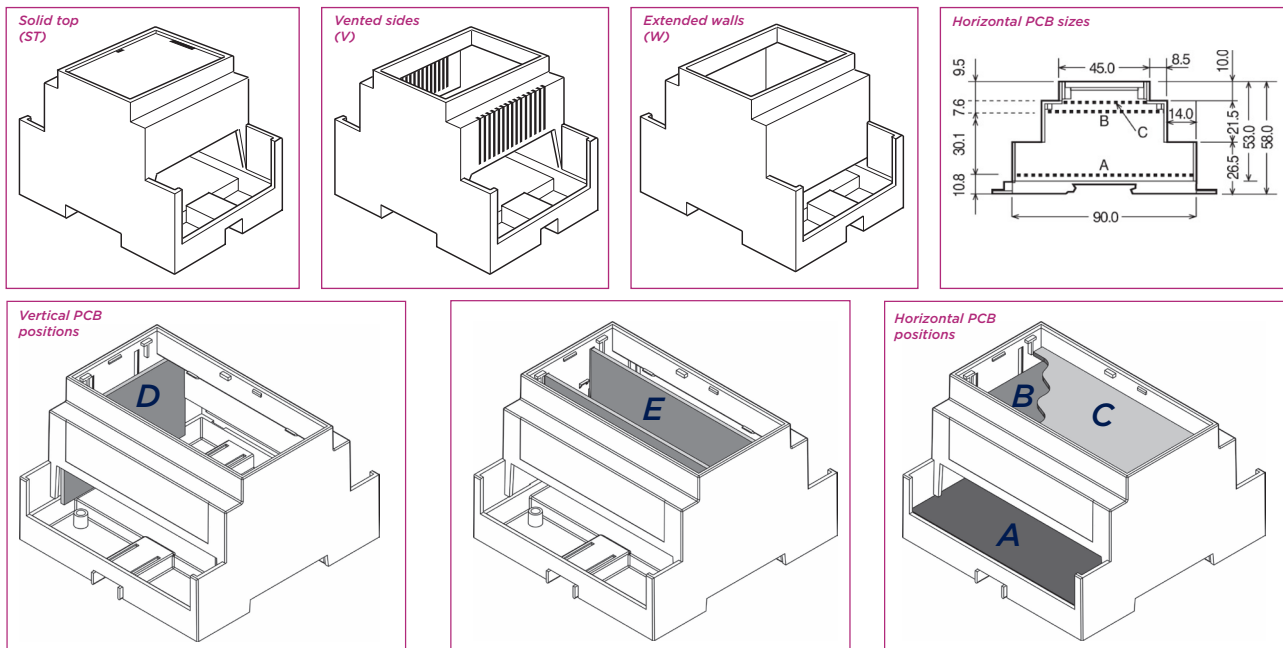
Product overview

- Designed to meet the requirements of DIN 43880
- Snap fit modular design for ease of assembly and custom kitting
- Base fits 35mm (EN60715) DIN Rail or directly to flat surface
- Moulded in light grey UL94-V0 flame retardant polycarbonate
- Carries up to 3 PCBs horizontally or 2 vertically
- Base PCB screw size - No.6 x 1/4" self tapping screw
- Snap fit terminal cover options for IP20 finger protection
- Snap in top covers available in grey, clear, transparent red and smoked
- Standard enclosure consists of base, top and rail/wall clips
- Open top as standard, solid top, vented and extended wall options available
- Covers and terminal guards ordered separately and can be supplied in kits
- Easily customised covers and terminal guards and CNMB base
- Clear, smoked and red covers are moulded in PC UL94-V2
- Grey covers are PC UL94-V0
- Enclosed base offers isolation from DIN Rail
- Front panel (covers) ideal for screen printing and recessed solid top for labels and membranes
- Other colours and EMC shielding available to order

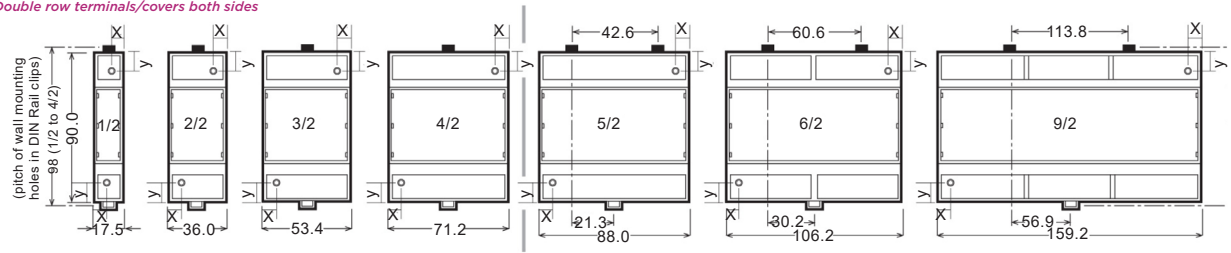


| BOX LENGTH | | HORIZONTAL PCB SIZES | | | VERTICAL PCB SIZES | |
|------------|---------|----------------------|------------|-----------|--------------------|-----------|
| | | A | B | C | D | E |
| CNMB/1- | 17.5mm | 86.5x14mm | 57x14mm | 41.8x14mm | 34x59.6mm | 40x14.8mm |
| CNMB/2- | 36mm | 86.5x33mm | 57x32mm | 42x32mm | 34x59.6mm | 40x33mm |
| CNMB/3- | 53.4mm | 86.5x50mm | 57x49mm | 42x49mm | 34x59.6mm | 40x50mm |
| CNMB/4- | 71.2mm | 86.5x68mm | 57x67mm | 42x67mm | 34x59.6mm | 40x68mm |
| CNMB/5- | 88mm | 86.5x84mm | 57x83mm | 42x83mm | 34x59.6mm | 40x84mm |
| CNMB/6- | 106.2mm | 86.5x103mm | 57x102mm | 42x102mm | 34x59.6mm | 40x103mm |
| CNMB/9- | 159.2mm | 86.5x156mm | 57x155.5mm | 42x155mm | 34x59.6mm | 40x155mm |
| CNMB/12- | 212.1mm | 86.5x208mm | 57x207mm | 42x207mm | 34x59.6mm | 40x208mm |

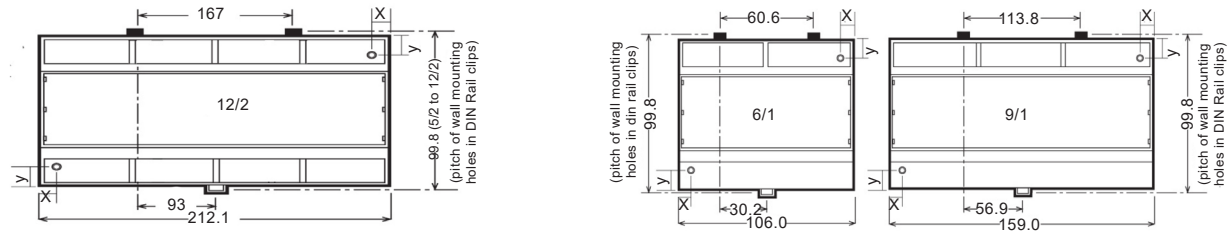
For exposed terminal positions both sides, add /2 to part number (e.g. CNMB/5/2)
 For exposed terminal positions one side only, add /1 to part number (e.g. CNMB/5/1). Please note, this is only available as standard in sizes 5, 6 and 9
 Box supplied with open top as standard
 For solid recessed top used for membrane keypads or clear covers to enclose labels, add ST to part number (e.g. CNMB/3ST/2)
 For cooling vents both sides add V to part number (e.g. CNMB/3V/2)
 For extended side walls which meet the lower PCB behind terminals, add W to part number (e.g. CNMB/3W/2) - terminal guards do not fit extended wall versions
 Combinations of body types are available (e.g. solid top with vented sides). These may be subject to MOQ



Double row terminals/covers both sides



Single row terminals/covers on one side

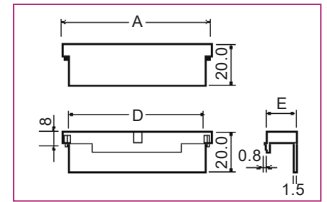


Solid

| PART NO. | STYLE | A | D | E |
|------------|-------|--------|--------|--------|
| CNMB/1/TGS | Solid | 17.5mm | 15.0mm | 14.3mm |
| CNMB/2/TGS | Solid | 35.5mm | 29.9mm | 13.8mm |
| CNMB/3/TGS | Solid | 52.8mm | 45.5mm | 13.8mm |
| CNMB/4/TGS | Solid | 70.6mm | 59.9mm | 13.8mm |
| CNMB/5/TGS | Solid | 87.6mm | 79.5mm | 13.8mm |

For 6, 9 and 12 size module use CNMB/3TGS

CNMB/x/TGS

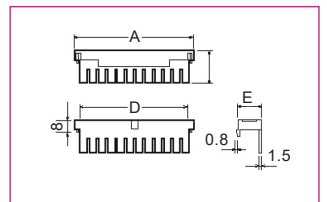
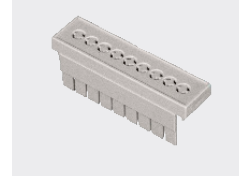


5.08mm pitch perforated

| PART NO. | STYLE | A | D | E |
|---------------|------------|--------|--------|--------|
| CNMB/1/TG508P | Perforated | 17.5mm | 15.0mm | 14.3mm |
| CNMB/2/TG508P | Perforated | 35.5mm | 29.9mm | 13.8mm |
| CNMB/3/TG508P | Perforated | 52.8mm | 45.5mm | 13.8mm |
| CNMB/4/TG508P | Perforated | 70.6mm | 59.9mm | 13.8mm |
| CNMB/5/TG508P | Perforated | 87.6mm | 79.5mm | 13.8mm |

For 6, 9 and 12 size module use CNMB/3/TG508P

CNMB/x/TG508P

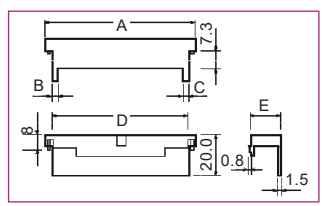


5.08mm pitch pre-drilled

| PART NO. | STYLE | POLES | A | B | C | D | E |
|--------------|-------------|-------|--------|-------|-------|--------|--------|
| CNMB/1/TG508 | Pre-drilled | 3 | 17.5mm | 2.3mm | 2.3mm | 15.0mm | 14.3mm |
| CNMB/2/TG508 | Pre-drilled | 6 | 35.5mm | 0.9mm | 2.7mm | 29.9mm | 13.8mm |
| CNMB/3/TG508 | Pre-drilled | 9 | 52.8mm | 2.3mm | 2.3mm | 45.5mm | 13.8mm |
| CNMB/4/TG508 | Pre-drilled | 12 | 70.6mm | 2.7mm | 5.8mm | 59.9mm | 13.8mm |
| CNMB/5/TG508 | Pre-drilled | 15 | 87.6mm | 2.7mm | 5.8mm | 79.5mm | 13.8mm |

For 6, 9 and 12 size module use CNMB/3/TG508

CNMB/x/TG508

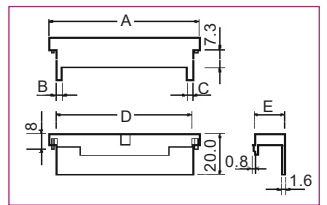
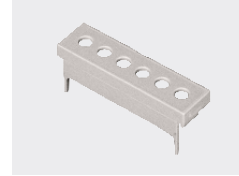


7.5mm pitch pre-drilled

| PART NO. | STYLE | POLES | A | B | C | D | E |
|--------------|-------------|-------|--------|-------|-------|--------|--------|
| CNMB/1/TG750 | Pre-drilled | 2 | 17.5mm | 2.3mm | 2.3mm | 15.0mm | 14.3mm |
| CNMB/2/TG750 | Pre-drilled | 4 | 35.5mm | 0.9mm | 2.7mm | 29.9mm | 13.8mm |
| CNMB/3/TG750 | Pre-drilled | 6 | 52.8mm | 2.3mm | 2.3mm | 45.5mm | 13.8mm |
| CNMB/4/TG750 | Pre-drilled | 8 | 70.6mm | 2.7mm | 5.8mm | 59.9mm | 13.8mm |
| CNMB/5/TG750 | Pre-drilled | 10 | 87.6mm | 2.7mm | 5.8mm | 79.5mm | 13.8mm |

For 6, 9 and 12 size module use CNMB/3/TG750

CNMB/x/TG750

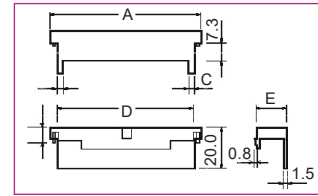


10.16mm pitch pre-drilled

| PART NO. | STYLE | POLES | A | B | C | D | E |
|--------------|-------------|-------|--------|-------|-------|--------|--------|
| CNMB/1/TG100 | Pre-drilled | 2 | 17.5mm | 1.0mm | 1.0mm | 15.0mm | 14.3mm |
| CNMB/2/TG100 | Pre-drilled | 3 | 35.5mm | 0.9mm | 0.9mm | 29.9mm | 13.8mm |
| CNMB/3/TG100 | Pre-drilled | 5 | 52.8mm | 1.0mm | 1.0mm | 45.5mm | 13.8mm |
| CNMB/4/TG100 | Pre-drilled | 6 | 70.6mm | 2.7mm | 2.7mm | 59.9mm | 13.8mm |
| CNMB/5/TG100 | Pre-drilled | 7 | 87.6mm | 2.7mm | 5.8mm | 79.5mm | 13.8mm |

For 6, 9 and 12 size module use CNMB/3/TG100

CNMB/x/TG100

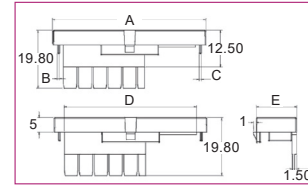


RJ45 5.08mm pitch perforated

| PART NO. | STYLE | POLES | A | B | C | D | E |
|---------------|------------|-------|--------|-------|-------|--------|--------|
| CNMB/3/TGRJ45 | Perforated | 5 | 52.8mm | 1.0mm | 1.0mm | 45.5mm | 13.8mm |

Can be used on sizes 3, 6, 9 and 12

CNMB/x/TGRJ45

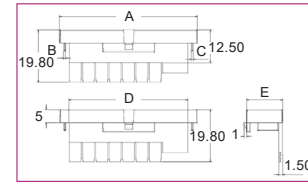


MINI USB 5.08mm pitch perforated

| PART NO. | STYLE | POLES | A | B | C | D | E |
|------------------|------------|-------|--------|-------|-------|--------|--------|
| CNMB/3/TGMINIUSB | Perforated | 7 | 52.8mm | 1.0mm | 1.0mm | 45.5mm | 13.8mm |

Can be used on sizes 3, 6, 9 and 12

CNMB/x/TGMINIUSB

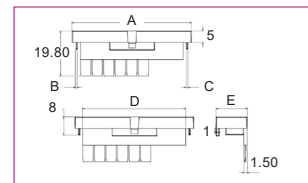


USB 5.08 pitch perforated

| PART NO. | STYLE | POLES | A | B | C | D | E |
|--------------|------------|-------|--------|-------|-------|--------|--------|
| CNMB/3/TGUSB | Perforated | 6 | 52.8mm | 1.0mm | 1.0mm | 45.5mm | 13.8mm |

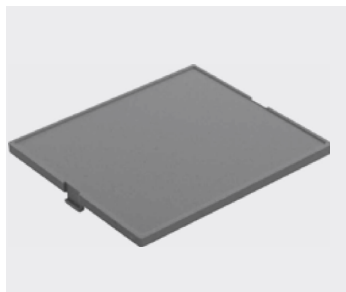
Can be used on sizes 3, 6, 9 and 12

CNMB/x/TGUSB



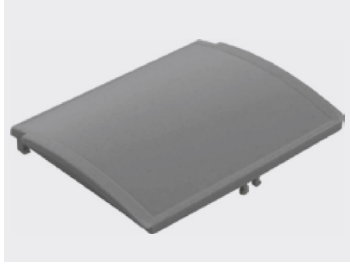
COVERS

Standard covers



| RED TRANSPARENT | SMOKED TRANSPARENT | CLEAR TRANSPARENT | GREY | SIZE |
|-----------------|--------------------|-------------------|------------|------|
| CNMB/1/PR | CNMB/1/PS | CNMB/1/PC | CNMB/1/PG | 1 |
| CNMB/2/PR | CNMB/2/PS | CNMB/2/PC | CNMB/2/PG | 2 |
| CNMB/3/PR | CNMB/3/PS | CNMB/3/PC | CNMB/3/PG | 3 |
| CNMB/4/PR | CNMB/4/PS | CNMB/4/PC | CNMB/4/PG | 4 |
| CNMB/5/PR | CNMB/5/PS | CNMB/5/PC | CNMB/5/PG | 5 |
| CNMB/6/PR | CNMB/6/PS | CNMB/6/PC | CNMB/6/PG | 6 |
| CNMB/9/PR | CNMB/9/PS | CNMB/9/PC | CNMB/9/PG | 9 |
| - | - | CNMB/12/PC | CNMB/12/PG | 12 |

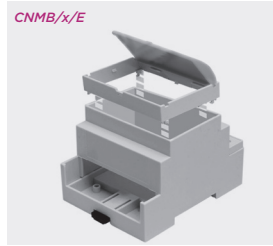
Curved covers



| RED TRANSPARENT | SMOKED TRANSPARENT | CLEAR TRANSPARENT | GREY | SIZE |
|-----------------|--------------------|-------------------|------------|------|
| CNMB/2/PRC | CNMB/2/PSC | CNMB/2/PCC | CNMB/2/PGC | 2 |
| CNMB/3/PRC | CNMB/3/PSC | CNMB/3/PCC | CNMB/3/PGC | 3 |
| CNMB/4/PRC | CNMB/4/PSC | CNMB/4/PCC | CNMB/4/PGC | 4 |
| CNMB/5/PRC | CNMB/5/PSC | CNMB/5/PCC | CNMB/5/PGC | 5 |
| CNMB/6/PRC | CNMB/6/PSC | CNMB/6/PCC | CNMB/6/PGC | 6 |
| CNMB/9/PRC | CNMB/9/PSC | CNMB/9/PCC | CNMB/9/PGC | 9 |

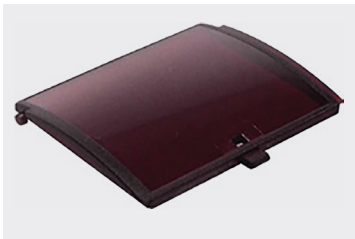
EXTENDED HEIGHT MODULES

- 16mm high
- Accepts curved hinged cover only
- Adds an additional horizontal PCB slot
- Does not fit on solid top CNMB's



| PART NO. | WIDTH | SIZE |
|----------|---------|------|
| CNMB/2/E | 34.7mm | 2 |
| CNMB/3/E | 52.0mm | 3 |
| CNMB/4/E | 70.0mm | 4 |
| CNMB/5/E | 86.5mm | 5 |
| CNMB/6/E | 104.5mm | 6 |
| CNMB/9/E | 157.7mm | 9 |

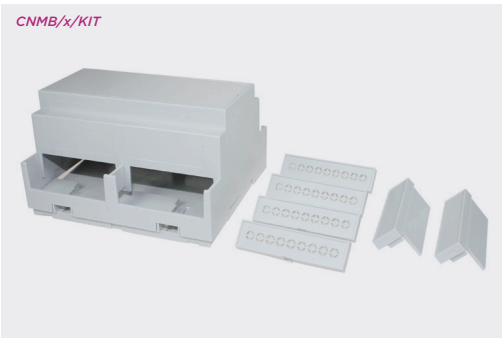
Curved hinged covers



| RED TRANSPARENT | CLEAR TRANSPARENT | GREY | SIZE |
|-----------------|-------------------|-------------|------|
| CNMB/2/HPRC | CNMB/2/HPCC | CNMB/2/HPGC | 2 |
| CNMB/3/HPRC | CNMB/3/HPCC | CNMB/3/HPGC | 3 |
| CNMB/4/HPRC | CNMB/4/HPCC | CNMB/4/HPGC | 4 |
| CNMB/5/HPRC | CNMB/5/HPCC | CNMB/5/HPGC | 5 |
| CNMB/6/HPRC | CNMB/6/HPCC | CNMB/6/HPGC | 6 |
| CNMB/9/HPRC | CNMB/9/HPCC | CNMB/9/HPGC | 9 |

For use with extended height module only

ENCLOSURE KITS



- Each kit contains one grey panel cover and a selection of solid and perforated terminal guards
- Kits of the most frequently used components are available to order

** For size 6, 9 and 12, multiple 'size 3' terminal guards are supplied. For example size 6 requires 2x 'size 3' guards per side.*

Kits are also available for vented, solid top and extended wall bodies e.g. CNMB/2ST/KIT.

Extended wall kits do not come with terminal guards

| | COMPONENT | COVER | TERMINAL GUARDS | | EXTENSION MODULE |
|----------|--------------|-------|-----------------|------|------------------|
| KIT | KIT PART NO. | /PG | /TG508P | /TGS | /E |
| STANDARD | CNMB/1/KIT | 1 | 2 | 1 | - |
| | CNMB/2/KIT | 1 | 2 | 1 | - |
| | CNMB/3/KIT | 1 | 2 | 1 | - |
| | CNMB/4/KIT | 1 | 2 | 1 | - |
| | CNMB/5/KIT | 1 | 2 | 1 | - |
| | CNMB/6/KIT | 1 | 4* | 2* | - |
| | CNMB/9/KIT | 1 | 6* | 3* | - |
| | CNMB/12/KIT | 1 | 8* | 4* | - |

| | COMPONENT | COVER | TERMINAL GUARDS | | EXTENSION MODULE |
|-----------------|--------------|-------|-----------------|------|------------------|
| KIT | KIT PART NO. | /HPCC | /TG508P | /TGS | /E |
| EXTENDED HEIGHT | CNMB/2E/KIT | 1 | 2 | 1 | 1 |
| | CNMB/3E/KIT | 1 | 2 | 1 | 1 |
| | CNMB/4E/KIT | 1 | 2 | 1 | 1 |
| | CNMB/5E/KIT | 1 | 2 | 1 | 1 |
| | CNMB/6E/KIT | 1 | 4* | 2* | 1 |
| | CNMB/9E/KIT | 1 | 6* | 3* | 1 |

CNMB TERMINAL BLOCK SELECTION CHART

| PITCH | TERMINAL BLOCK PART NUMBER | CNMB/1 | CNMB/2 | CNMB/3 | CNMB/4 | CNMB/5 | CNMB/6* | CNMB/9* | CNMB/12* |
|---------|---|-----------------|--------|--------|--------|--------|---------|---------|----------|
| | | NUMBER OF POLES | | | | | | | |
| 3.5MM | CTBP3051 PCB terminal Wire protector | 4 | 8 | 12 | 16 | 20 | 12 | 12 | 12 |
| | CTBP0305 PCB terminal Rising clamp | 4 | 8 | 12 | 16 | 20 | 12 | 12 | 12 |
| | CTBP92VD/R Pluggable terminal female Rising clamp | 4 | 8 | 12 | 16 | 20 | 12 | 12 | 12 |
| | CTBP93VD Pluggable terminal male | 4 | 8 | 12 | 16 | 20 | 12 | 12 | 12 |
| 3.81MM | CTBP0308 PCB terminal Rising clamp | 4 | 8 | 12 | 16 | 20 | 12 | 12 | 12 |
| | CTBP92VE/R Pluggable terminal Rising clamp | 4 | 8 | 12 | 16 | 20 | 12 | 12 | 12 |
| | CTBP93VE Pluggable terminal male | 4 | 8 | 12 | 16 | 20 | 12 | 12 | 12 |
| 5MM | CTBP5000 PCB terminal Wire protector | 3 | 6 | 9 | 12 | 15 | 9 | 9 | 9 |
| | CTBP0500 PCB terminal Rising clamp | 3 | 6 | 9 | 12 | 15 | 9 | 9 | 9 |
| | CTBP1000 PCB terminal Wire protector | 3 | 6 | 9 | 12 | 15 | 9 | 9 | 9 |
| | CTBP0100 PCB terminal Rising clamp | 3 | 6 | 9 | 12 | 15 | 9 | 9 | 9 |
| | CTB7000 PCB terminal Rising clamp | 3 | 6 | 9 | 12 | 15 | 9 | 9 | 9 |
| | CTBP92VG/R Pluggable terminal female Rising clamp | 3 | 6 | 9 | 12 | 15 | 9 | 9 | 9 |
| | CTBP9300 Pluggable terminal male | 3 | 6 | 9 | 12 | 15 | 9 | 9 | 9 |
| 5.08MM | CTBP0108 PCB terminal Rising clamp | 3 | 6 | 9 | 12 | 15 | 9 | 9 | 9 |
| | CTBP0508 PCB terminal Rising clamp | 3 | 6 | 9 | 12 | 15 | 9 | 9 | 9 |
| | CTBP0708 PCB terminal Rising clamp | 3 | 6 | 9 | 12 | 15 | 9 | 9 | 9 |
| | CTBP92VJ/R Pluggable terminal female Rising clamp | 3 | 6 | 9 | 12 | 15 | 9 | 9 | 9 |
| | CTBP9308 Pluggable terminal male | 3 | 6 | 9 | 12 | 15 | 9 | 9 | 9 |
| 7.5MM | CTBP55VK PCB terminal Wire protector | 2 | 4 | 6 | 8 | 10 | 6 | 6 | 6 |
| | CTBP07VK PCB terminal Rising clamp | 2 | 4 | 6 | 8 | 10 | 6 | 6 | 6 |
| | CTBP0110 PCB terminal Rising clamp | 2 | 4 | 6 | 8 | 10 | 6 | 6 | 6 |
| 9.5MM | CTBP04VZ PCB terminal Rising clamp | 0 | 3 | 5 | 6 | 8 | 5 | 5 | 5 |
| 10.16MM | CTB0609 PCB terminal Rising clamp | 0 | 3 | 5 | 7 | 9 | 5 | 5 | 5 |

Please note: size /6, /9 & /12 have the same sized terminal space as a size /3 housing and therefore use the same sized terminal blocks

