


Nominal Coil Voltage	Part Number
12 Vdc	401-2208
15 Vdc	401-2908
20 Vdc	401-2708
24 Vdc	401-2808
28 Vdc	401-2308



**DowKey<sup>®</sup>**  
**Microwave**  
 CORPORATION

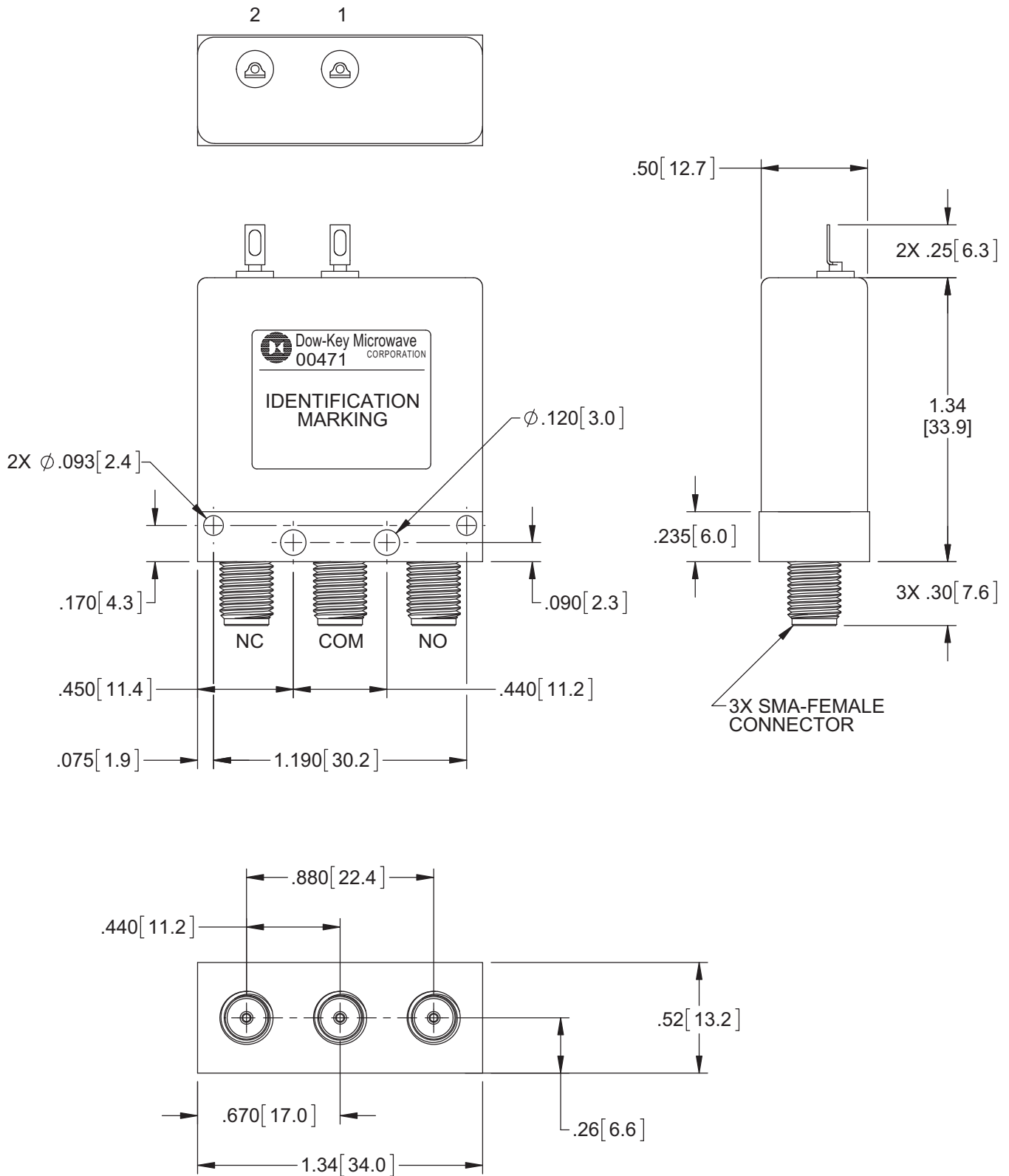
4822 McGrath Street  
 Ventura, CA. 93003-5641  
 PH: (805) 650-0260  
 FAX: (805) 650-1734

A DOVER TECHNOLOGIES COMPANY

**SWITCH, SPDT, FAILSAFE  
 SMA-FEMALE CONNECTORS**

CODE IDENT. NO. <b>00471</b>	DWG. NO. <b>401-2X08</b>
SCALE NONE	FINAL ASSY: 401-2308
SHEET 1 OF 3	

# OUTLINE DRAWING:



[ ] MILLIMETERS

UNLESS OTHERWISE SPECIFIED TOLERANCES ARE:  
 .XXX  $\pm .010$  ANGLES:  $\pm 3^\circ$   
 .XX  $\pm .030$

CODE IDENT. NO.  
**00471**

DWG. NO.  
**401-2X08**

REV.  
**K**

SCALE NONE

FINAL ASSY: 401-2308

SHEET 2 OF 3

# SPECIFICATION:

## 1.0 RF CHARACTERISTICS:

1.1 FREQUENCY (GHz)	DC - 1	1 - 4	4 - 8	8 - 12	12 - 18
1.2 VSWR (RATIO MAX)	1.10:1	1.15:1	1.20:1	1.30:1	1.35:1
1.3 INSERTION LOSS (dB MAX)	0.10	0.15	0.20	0.30	0.35
1.4 ISOLATION (dB MIN)	85	80	70	65	60
1.5 RF POWER (WATTS CW MAX) AT SEA LEVEL, +25°C, LOAD VSWR 1:1	200	125	90	75	60
1.6 IMPEDANCE (NOMINAL)	50 OHMS				

## 2.0 ACTUATION DATA:

2.1	NOMINAL VOLTAGE	OPERATING VOLTAGE	CURRENT (NOMINAL) @ NOMINAL VOLTAGE & 25°C
	12	11-14	185mA
	15	13-17	160mA
	20	17-23	140mA
	24	20-28	120mA
	28	24-32	90mA

2.2 SWITCHING TIME 15mS MAX  
2.3 OPERATING MODE FAILSAFE

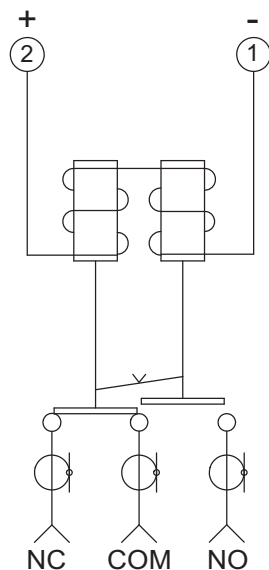
## 3.0 MECHANICAL:

3.1 CONTACT ARRANGEMENT SPDT  
3.2 RF CONTACTS BREAK BEFORE MAKE  
3.3 WEIGHT 1.2oz (34g) NOMINAL  
3.4 DESIGN LIFE 1,000,000 CYCLES MINIMUM

## 4.0 ENVIRONMENTAL:

4.1 OPERATING TEMPERATURE -25°C TO +65°C  
4.2 STORAGE TEMPERATURE -55°C TO +85°C  
4.3 SEAL: EPOXY SEAL

# SCHEMATIC:



SWITCH SHOWN IN THE DE-ENERGIZED POSITION

CODE IDENT. NO. <b>00471</b>	DWG. NO. <b>401-2X08</b>	REV. <b>K</b>
SCALE NONE	FINAL ASSY: 401-2308	SHEET 3 OF 3