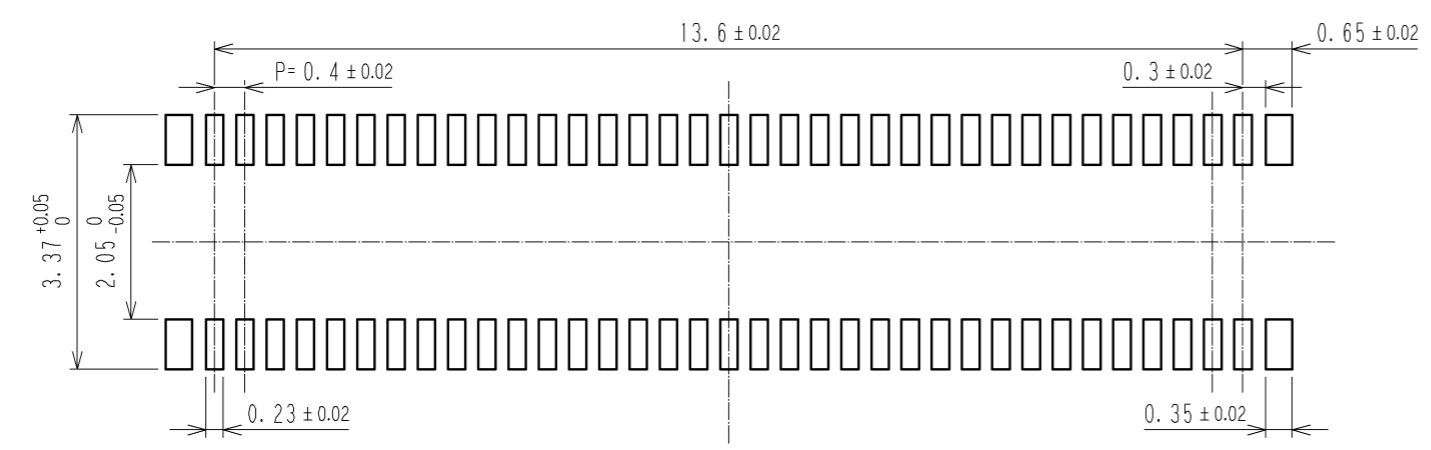
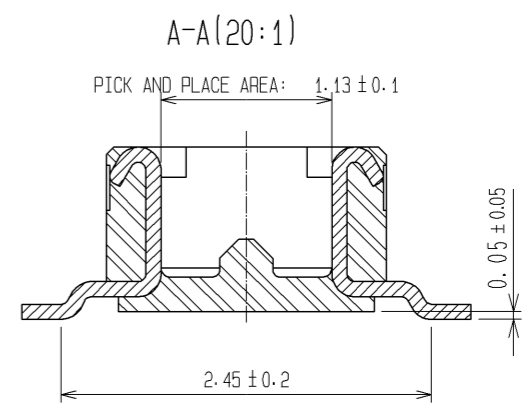


RECOMMENDED PATTERN

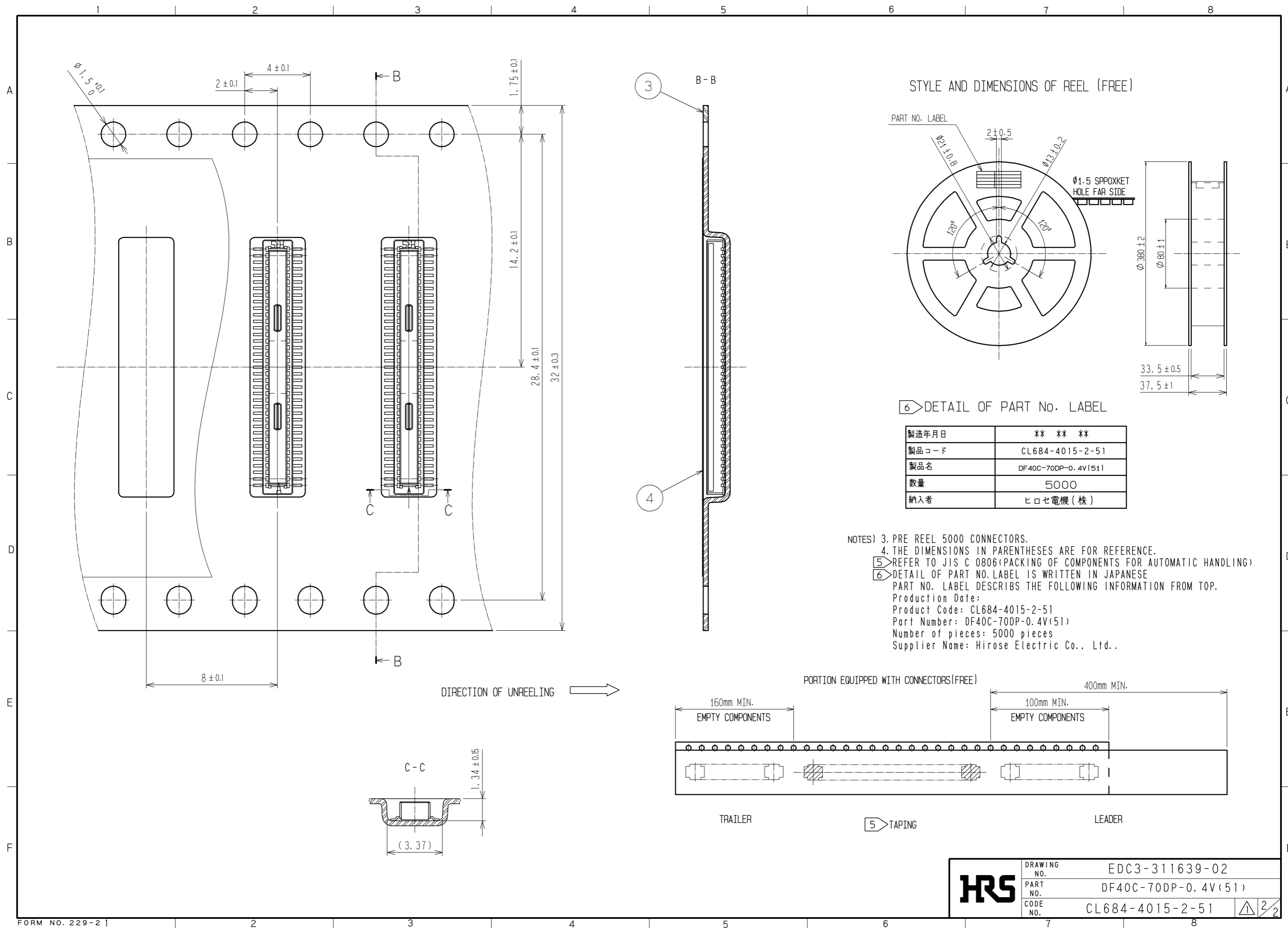


RECOMMENDED METAL MASK THICKNESS: 120μm
 RECOMMENDED METAL MASK OPENING RATIO: 80% FOR LEAD PAD

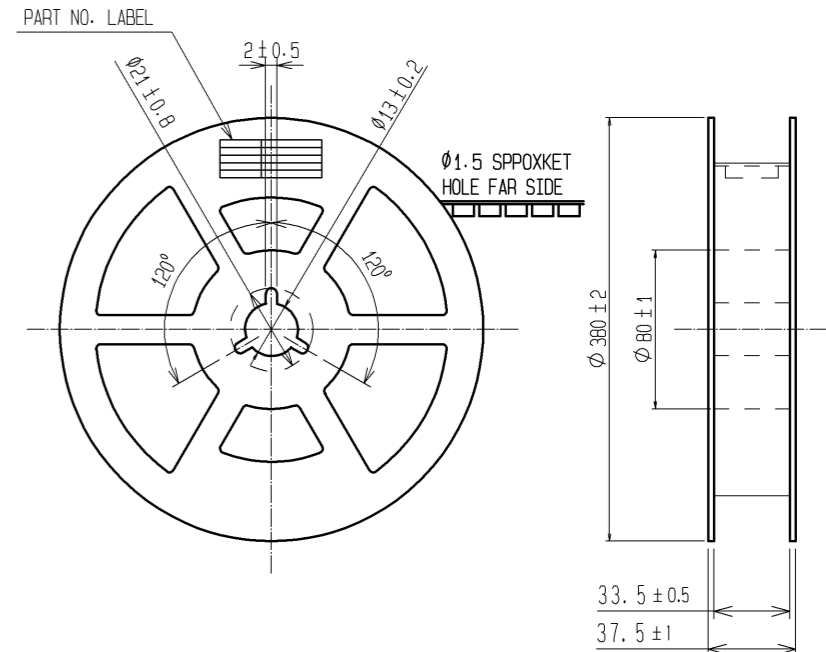


- NOTES) 1. ALL LEADS CO-PLANARITY SHALL BE 0.1MAX.
 2 EACH ONE CONTACT AT 4 CORNERS SHALL BE USED AS METAL HOLD DOWN.
 3 HRS MARK AND CAV NO. IS INDICATED IN APPROXI POSITION SHOWN.

3	PS	CLEAR(EMBOSSED CARRIER TAPE)	4	POLYESTER	CLEAR(COVER TAPE)
1	LCP	UL94V-0. BLACK	2	PHOSPHOR BRONZE	GOLD 0.05μm MIN UNDERPLATING: NICKEL 1μm MIN
NO.	MATERIAL	FINISH . REMARKS	NO.	MATERIAL	FINISH . REMARKS
UNITS mm		SCALE 10: 1	COUNT 2	DESCRIPTION OF REVISIONS DIS-H-001826	DESIGNED TK. SUZUKI
HRS HIROSE ELECTRIC CO., LTD.		APPROVED : MO. NAKAMURA 07. 02. 15	DRAWING NO. EDC3-311639-02		
		CHECED : KH. IKEDA 07. 02. 15	PART NO. DF40C-70DP-0. 4V(51)		
		DESIGNED : TK. SUZUKI 07. 02. 15	CODE NO. CL684-4015-2-51		
		DRAWN : TK. SUZUKI 07. 02. 15	DATE 07. 02. 26		



STYLE AND DIMENSIONS OF REEL (FREE)

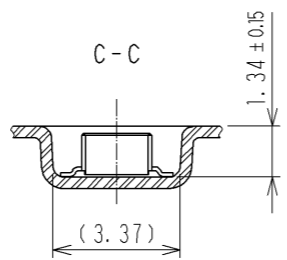
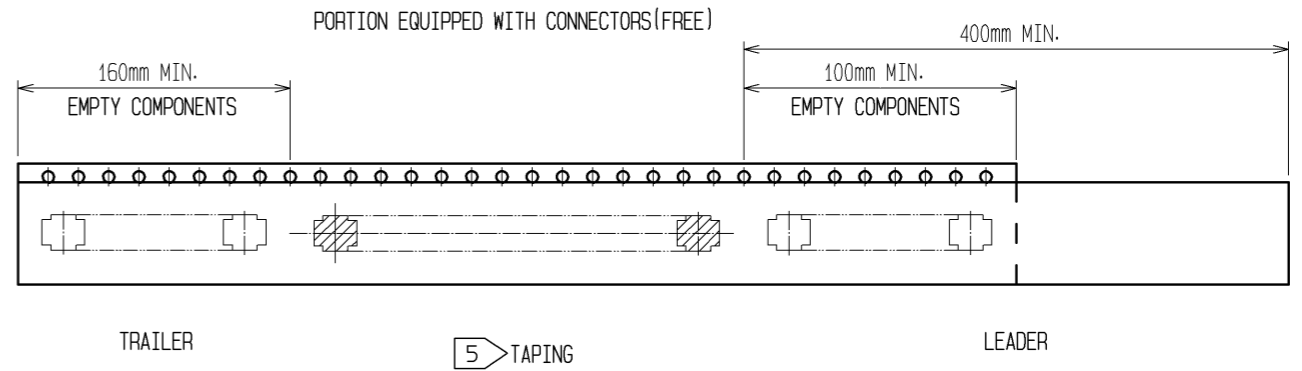


6) DETAIL OF PART NO. LABEL

製造年月日	** ** *
製品コード	CL684-4015-2-51
製品名	DF40C-70DP-0.4V(51)
数量	5000
納入者	ヒロセ電機(株)

NOTES) 3. PRE REEL 5000 CONNECTORS.
 4. THE DIMENSIONS IN PARENTHESES ARE FOR REFERENCE.
 5) REFER TO JIS C 0806(PACKING OF COMPONENTS FOR AUTOMATIC HANDLING)
 6) DETAIL OF PART NO. LABEL IS WRITTEN IN JAPANESE
 PART NO. LABEL DESCRIBES THE FOLLOWING INFORMATION FROM TOP.
 Production Date:
 Product Code: CL684-4015-2-51
 Part Number: DF40C-70DP-0.4V(51)
 Number of pieces: 5000 pieces
 Supplier Name: Hirose Electric Co., Ltd..

DIRECTION OF UNREELING →



HRS	DRAWING NO.	EDC3-311639-02
	PART NO.	DF40C-70DP-0.4V(51)
	CODE NO.	CL684-4015-2-51
		△ 2/2