

MATERIALS AND FINISHES

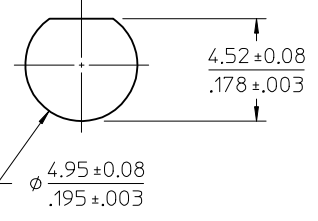
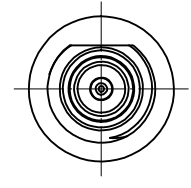
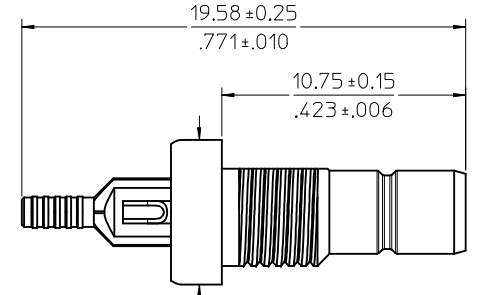
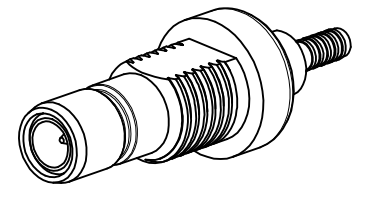
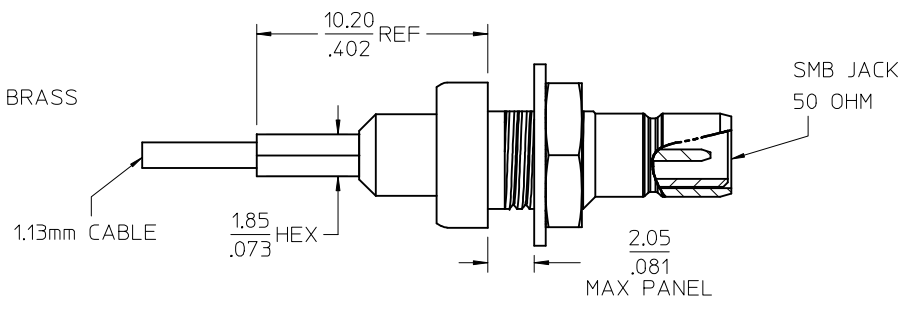
BODY, CRIMP TUBE, REAR BODY: BRASS
PLATED NICKEL

CENTER CONTACT: BRASS
PLATED GOLD

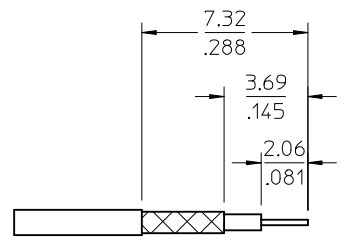
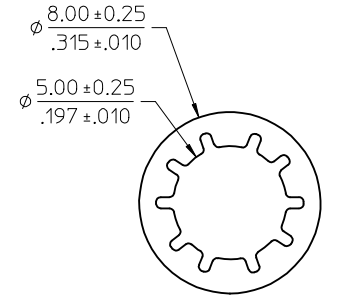
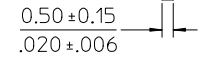
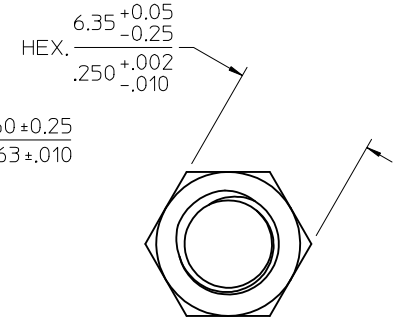
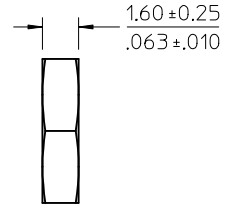
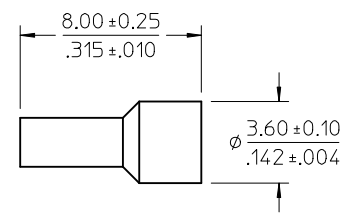
INSULATOR: TEFLON

WASHER: PHOSPHOR BRONZE
PLATED NICKEL

NUT: BRASS
PLATED NICKEL



RECOMMENDED MOUNTING HOLE



RECOMMENDED CABLE STRIP
1.13mm CABLE

73403-6230
PART NO.

PS-89675-3540	PRODUCT SPEC.
MIL-STD-348A, FIG.311-1	INTERFACE
SPECIFICATION	DESCRIPTION

CHG: UPDATE VIEW ADD CABLE STRIP PS WAS PS-73599-0099 INTERFACE REF WAS FIG 407.1	
EC NO: URF2014-0069 DRWN:WIENER 2013/07/31 CHKD:SSS 2013/08/01 APPR:WIENER 2013/08/01	DESCRIPTION C1

QUALITY SYMBOLS ▽=0 ▽=0	GENERAL TOLERANCES (UNLESS SPECIFIED) mm INCH 4 PLACES ± --- ± --- 3 PLACES ± --- ± --- 2 PLACES ± --- ± --- 1 PLACE ± --- ± --- ANGULAR ± 2 °
-------------------------------	---

DIMENSION STYLE MM/IN DRAWN BY DATE EL IN 2011/10/06 CHECKED BY DATE APPROVED BY DATE MHUANG 2011/10/25 MATERIAL NO. 734046230	SCALE DESIGN UNITS METRIC THIRD ANGLE PROJECTION
--	---

TITLE SMB 50 OHM JACK BULKHEAD FOR 1.13 CABLE SMB-J/CA	MOLEX INCORPORATED DOCUMENT NO. SD-73404-623 SHEET NO. 1 OF 1
---	---

THIS DRAWING CONTAINS INFORMATION THAT IS PROPRIETARY TO MOLEX INCORPORATED AND SHOULD NOT BE USED WITHOUT WRITTEN PERMISSION