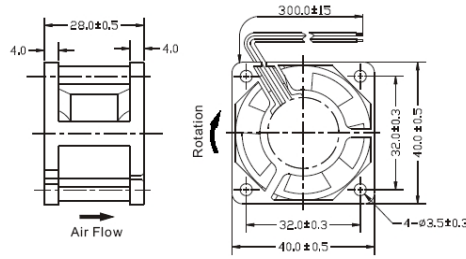


DC Fan

RD4028 Series

40 x 40 x 28mm (1.57 x 1.57 x 1.1in)



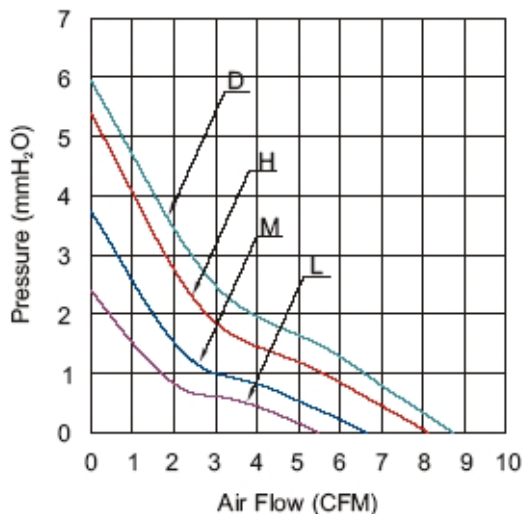
Unit: mm

Dimensions are in millimeters.



PART NO.	BEARINGS ●=Ball ○=Sleeve	VOLTAGE (V)	RANGE (VDC)	CURRENT (A)	SPEED (RPM)	AIR FLOW (Q) (m ³ /min)	AIR FLOW (Q) (CFM)	PRESSURE (P) (mmAq)	PRESSURE (P) (inH ₂ O)	NOISE (dBA)
RDH4028B5	●	5	3.5~5.75	0.35	7500	0.26	9.4	6.0	0.23	32
RDH4028S5	○	5	3.5~5.75	0.35	7500	0.26	9.4	6.0	0.23	32
RDM4028B5	●	5	3.5~5.75	0.30	6500	0.23	8.2	4.7	0.18	28
RDM4028S5	○	5	3.5~5.75	0.30	6500	0.23	8.2	4.7	0.18	28
RDL4028B5	●	5	3.5~5.75	0.22	5000	0.17	6.1	3.5	0.14	23
RDL4028S5	○	5	3.5~5.75	0.22	5000	0.17	6.1	3.5	0.14	23
RDH4028B	●	12	6.0~13.8	0.20	8800	0.31	11.2	8.1	0.32	36
RDH4028S	○	12	6.0~13.8	0.20	8800	0.31	11.2	8.1	0.32	36
RDM4028B	●	12	6.0~13.8	0.18	8000	0.28	10.1	6.8	0.26	33
RDM4028S	○	12	6.0~13.8	0.18	8000	0.28	10.1	6.8	0.26	33
RDL4028B	●	12	6.0~13.8	0.12	5000	0.17	6.1	3.5	0.14	23
RDL4028S	○	12	6.0~13.8	0.12	5000	0.17	6.1	3.5	0.14	23
RDH4028B2	●	24	12~27.6	0.16	8800	0.31	11.2	8.1	0.32	36
RDH4028S2	○	24	12~27.6	0.16	8800	0.31	11.2	8.1	0.32	36
RDM4028B2	●	24	12~27.6	0.12	8000	0.28	10.1	6.8	0.26	33
RDM4028S2	○	24	12~27.6	0.12	8000	0.28	10.1	6.8	0.26	33
RDL4028B2	●	24	12~27.6	0.09	5000	0.17	6.1	3.5	0.14	23
RDL4028S2	○	24	12~27.6	0.09	5000	0.17	6.1	3.5	0.14	23

Performance Curves



Electrical Specifications

Dielectric Strength:	500VAC (1mA/1min) or 600VAC (2 sec)	Frame to lead wires
Insulation Resistance:	>10MΩ	At 500VDC between frame and (+/-) lead wires
Motor:	Brushless DC with permanent magnet	
Tolerances:	+/-10% on rated current and speed	Power consumption of sleeve bearing may be up to 10% higher than ball bearing.

Mechanical Specifications

Airflow Direction:	Air over struts
Frame:	Thermoplastic PBT (GF 30%), Class UL94V-0
Impeller:	Thermoplastic PBT (GF 15%), Class UL94V-0
Lead Wires (L):	UL1007, 24AWG/260mm; Red(+); Black (-)
Weight:	36g (1.27oz)
Rotation:	Counterclockwise viewed from impeller
Life Expectancy:	Ball: 50,000 hrs. @25°C T _A (Sleeve: 30,000 hrs. @25°C T _A)

Environmental Specifications

Operating Temperature:	-10 to +70°C	At 35-85% relative humidity
Storage Temperature:	-40 to +80°C	At 35-85% relative humidity
Acoustical:	Anechoic chamber at free air.	Measured at 1 meter from the fan and perpendicular to the direction of the airflow.

Optional Features

Auto-Start (AS) - standard	Protects fan if obstructed by an external object.
Tachometer	Informs user of fan running speed.
Rotation Detection	Detects whether fan is running or has stopped.

Specifications subject to change without notice.