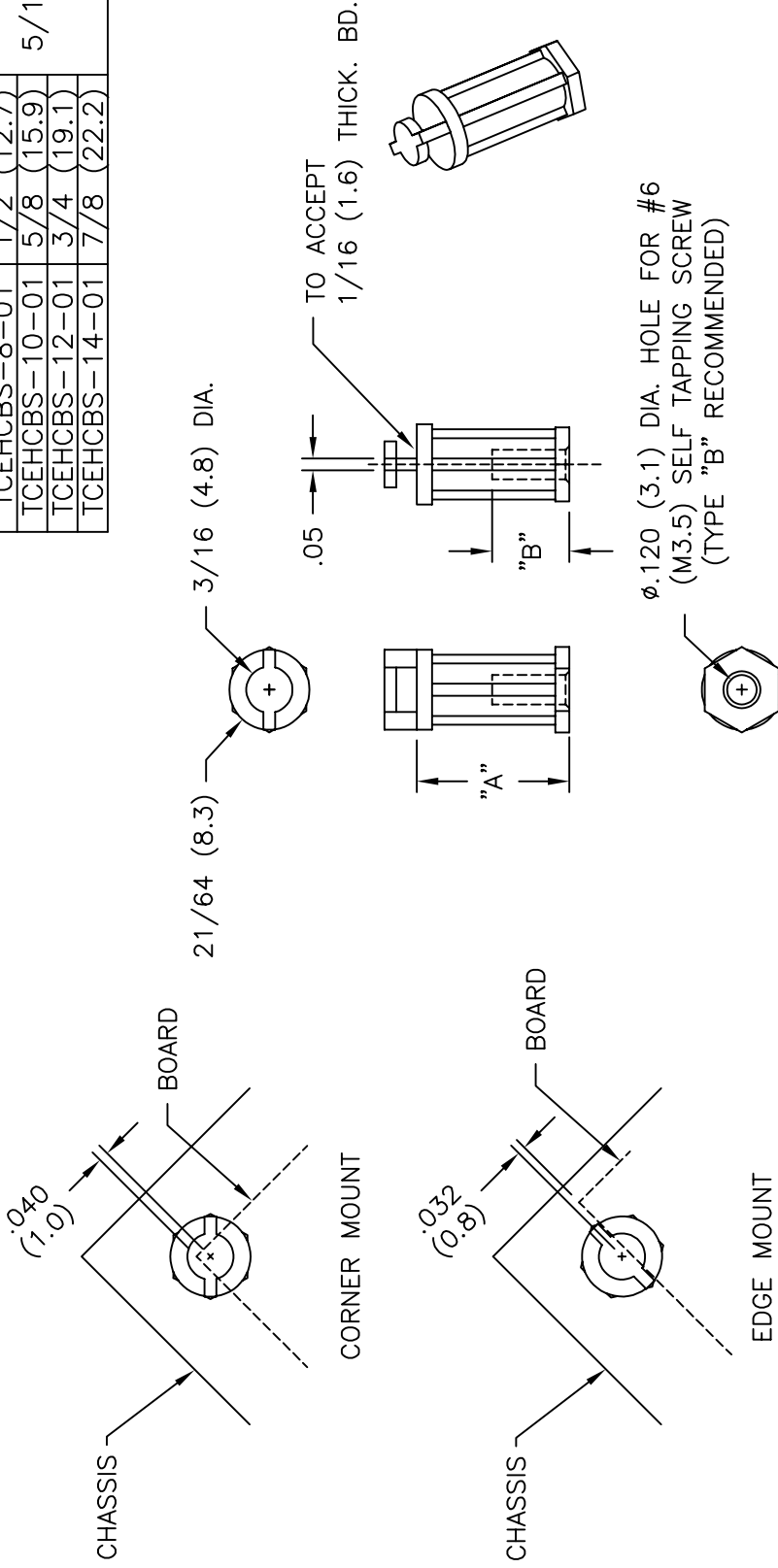


PART NO.	"A"	"B"
TCEHCBS-4-01	1/4 (6.4)	13/64 (5.2)
TCEHCBS-6-01	3/8 (9.5)	
TCEHCBS-8-01	1/2 (12.7)	
TCEHCBS-10-01	5/8 (15.9)	5/16 (7.9)
TCEHCBS-12-01	3/4 (19.1)	
TCEHCBS-14-01	7/8 (22.2)	



- NOTES:
- MATERIAL: NYLON 6/6 (RMS-01), FLAME RETARDANT NYLON (RMS-19), AVAILABLE BY SPECIAL ORDER ONLY.
 - COLOR: NATURAL.

TOLERANCES UNLESS NOTED .XX=±.010 .XXX=±.005 FRAC=±1/64 ANG=±1°		FILE # TCEHCBS	DWN: SM	APP:	DWG IN IN (MM)	FINAL
MATERIAL: SEE NOTES <td colspan="2">DT: 10/22/01 <td>DT:</td> <td colspan="2">PART #</td> </td>		DT: 10/22/01 <td>DT:</td> <td colspan="2">PART #</td>		DT:	PART #	
RE: RICHCO, INC.		RICHCO INC.		SEE TABLE		
FRAC=±1/64		PO BOX 804238, CHICAGO, 60680		PRINT TYPE		
ANG=±1°		(773) 539-4060		CA		

REV	ADDED MOUNTING PATTERN DESCRIPTION	SM	ENGR	DATE
A		10.24.01		

