

Type CNM-01 PC Board Type Fuse Clip Mini Auto Blade Fuses



www.optifuse.com

(619) 593-5050

Specifications:

Rating: 15A, 500V AC

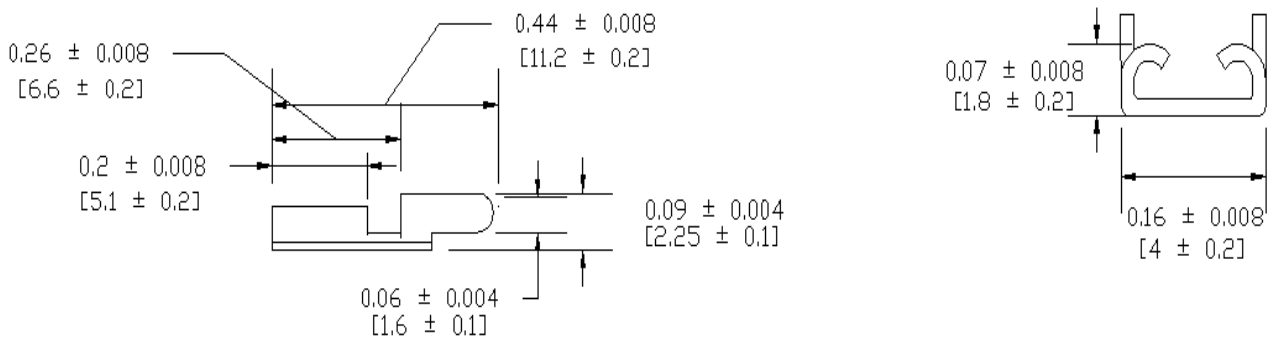
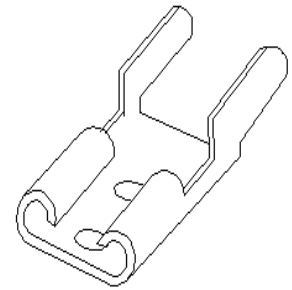
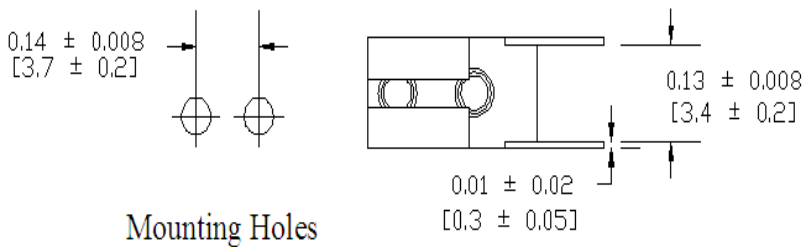
Body Material: Phosphor bronze

Finish: Tin-plated or Nickel-plated

(For Matte Tin-plated add **-CE** at end of part number ...ie. CNM-01-**CE**)

For use with Type **APM** / **ANM** Fuses (Mini-Automotive Blade Type)

Mechanical Dimensions: Inches [mm]



Warning:



-Operation beyond the specified maximum ratings or improper use may result in damage and possible electrical arcing and/or flame.

-Avoid contact of device with chemical solvent. Prolonged contact will damage the device performance.

Note: All specifications subject to change without notice.

Rev C 08/2018 - Page: 1/1
Code G02 – 01H