

# Type LPA-02

## In-Line Fuse Holder - Heavy Duty

### 1/4" x 1 1/4" (6.3 x 32mm) Fuses



www.optifuse.com

(619) 593-5050

#### Ratings:

**Fuse Type:** 1/4" x 1 1/4" (6.3 x 32mm)

**Electrical Rating:** 32VAC

**Body:** Nylon with glass fiber

**Contacts:** Brass

**Standard Wire Sizes:** #12 ~ #18 AWG

**Standard Wire Colors:** Red

**Standard Body colors:** White

**Standard Wire Length:** 4 inches

Available in various wire gauges and lengths, and body and wire colors.

Contact factory for those not listed above.

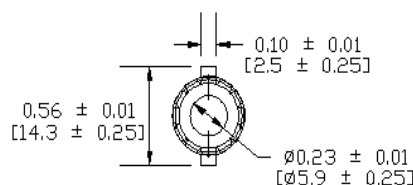
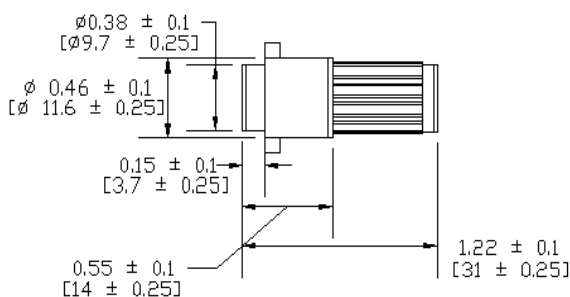
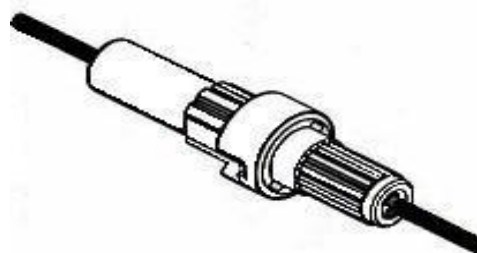
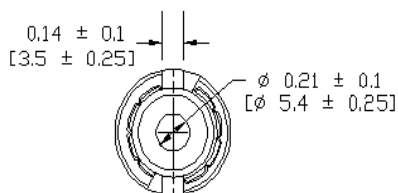
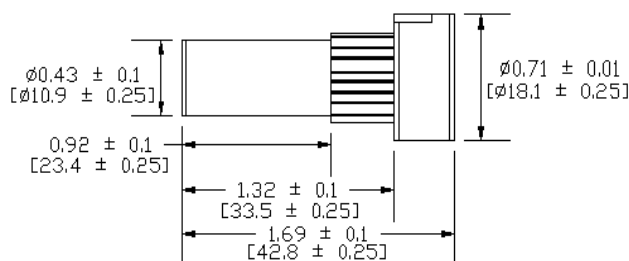
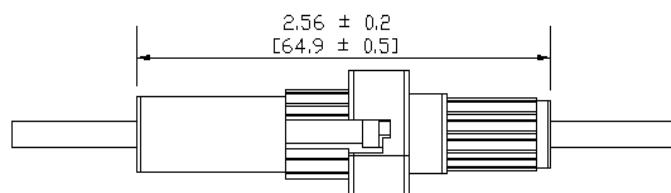
#### Mechanical Dimensions: Inches [mm]

#### Part number format

**LPA-02W-##R**

where ## = Wire gauge

Wire Gauge	Max. Amperage
12 AWG	30 A
14 AWG	20 A
16 AWG	15 A
18 AWG	10 A



#### Warning:



- Operation beyond the specified maximum ratings or improper use may result in damage and possible electrical arcing and/or flame.
- Avoid contact of device with chemical solvent. Prolonged contact may damage the device performance.
- Not designed for prolonged liquid exposure or submersible applications.