

 Harrisburg, PA 17105-3608		PART NO. 1432793-1		SHT. 1 OF 2	
DRAWN E. SIMPSON	APPROVAL B. TOEPFER	DATE FIRST DRAWN 05-26-05	SCALE 1:1	CUSTOMER DATA TYCO-STANDARD	
TOLERANCE UNLESS SPECIFIED OTHERWISE		O.X = +/- O.XX = +/- O.XXX = +/- ANGLES = +/-		CHANGES REV. DATE CO APP. 1 05-26-05 PRELIMINARY EDS B.T. A 08-22-05 RELEASE EDS B.T.	



DO NOT SCALE THIS DRAWING

ELECTRICAL CHARACTERISTICS: (ALL DATA APPLIES @ 23°C UNLESS OTHERWISE SPECIFIED)

COIL DATA:

NOMINAL VOLTAGE: 12 VDC
 OPERATE VOLTAGE: 7.8 VDC MAXIMUM
 RELEASE VOLTAGE: 1.2 VDC MINIMUM
 COIL RESISTANCE: 90 OHMS +/- 10%
 OPERATE TIME: 10 mSEC. MAXIMUM EXCLUDING BOUNCE
 RELEASE TIME: 13 mSEC. MAXIMUM EXCLUDING BOUNCE
 TEMPERATURE RANGE: OPERATING -40°C TO +85°C

CONTACT DATA: (CONTACT DATA IS FORMATTED N.O./N.C.)

CONTACT ARRANGEMENT: 1 FORM C (SPDT)
 CONTACT MATERIAL: AgSnO (SILVER TIN-OXIDE)
 CONTACT MILLIVOLT DROP: 200mv @ 35A ON N.O. CONTACTS (AFTER SWITCHING)
 250mv @ 20A ON N.C. CONTACTS (AFTER SWITCHING)
 MAXIMUM MAKE CURRENT: 90A/30A (LAMP) @ 16 VDC
 MAXIMUM BREAK CURRENT: 40A/30A @ 16 VDC RESISTIVE
 MAXIMUM CONTINUOUS CURRENT: 40A/30A @ 23°C, 35A/20A @ 85°C
 INITIAL BREAKDOWN CURRENT: 500V RMS CONTACTS TO COIL

EXPECTED LIFE:

100,000 OPERATIONS, 40 A, 14 VDC RESISTIVE ON NORMALLY OPEN CONTACT

MECHANICAL CHARACTERISTICS:

EXPECTED LIFE: 10 MILLION OPERATIONS, NO CONTACT LOAD
 TERMINALS: BRASS, UNPLATED

DRAWN APPROVAL DATE FIRST_DRAWN SCALE
 E.SIMPSON B. TOEPFER 05-26-05 1:1

TOLERANCE 0.X = +/-
 UNLESS 0.XX = +/-
 SPECIFIED 0.XXX = +/-
 OTHERWISE ANGLES = +/-

CUSTOMER DATA

CUSTOMER

TYCO-STADARD



REV A

DO NOT SCALE THIS DRAWING

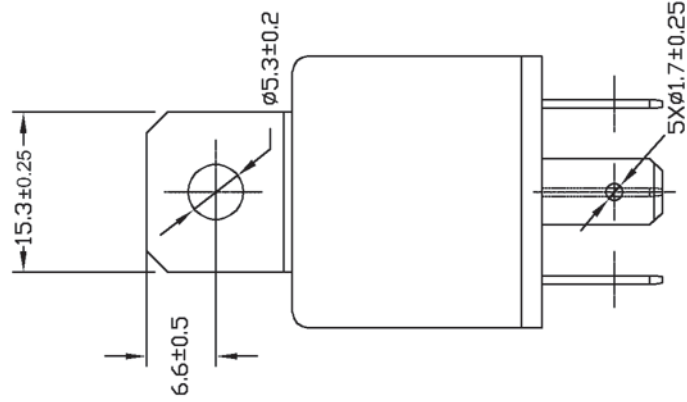
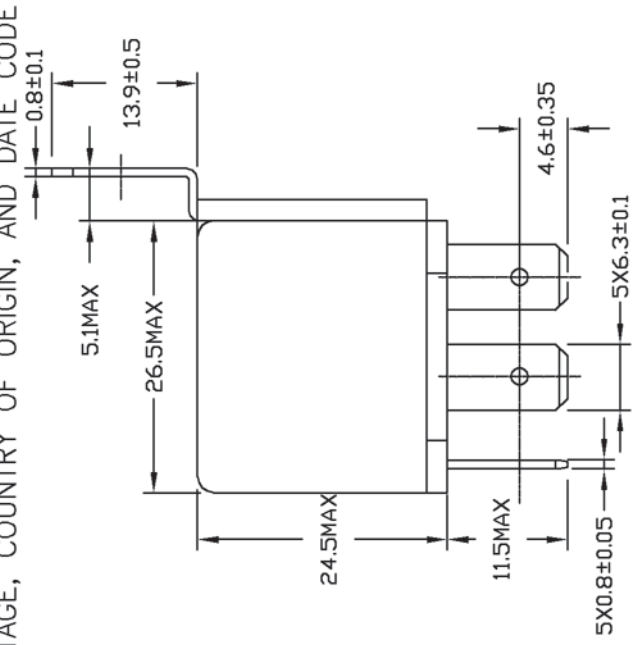
MILLIMETERS

PART NO.

1432793-1

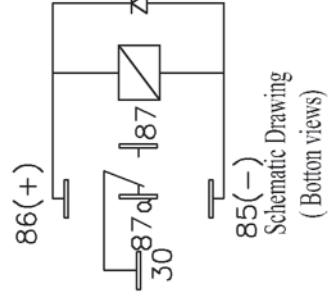
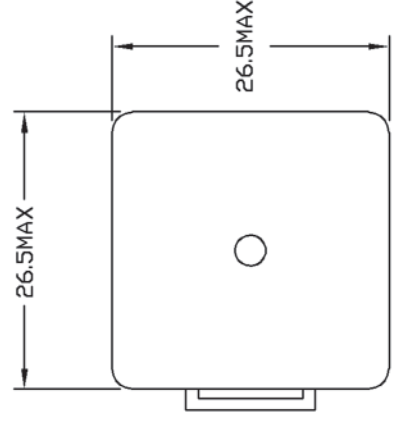
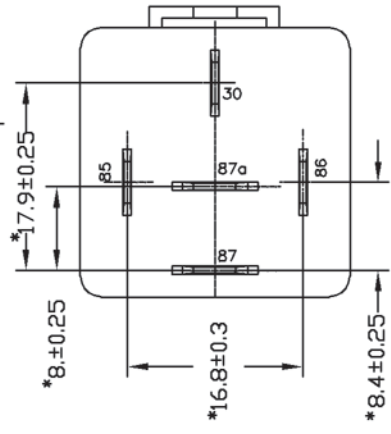
SHT. 2
OF 2

MARKING TO INCLUDE:
 TYCO NAME, TYCO PART NUMBER, SCHEMATIC,
 COIL VOLTAGE, COUNTRY OF ORIGIN, AND DATE CODE



* TERMINAL LOCATIONS
 APPLY AT THE BASE
 OF THE TERMINALS

K Aspect



85(-)
 Schematic Drawing
 (Bottom views)