

# CUSTOMER DATA

PART NO.

1432873-1

SHT. 1  
OF 2

DRAWN V.NESTOROVSKI APPROVAL B. TOEPFER DATE FIRST\_DRAWN 08-10-06 SCALE 1:1

CUSTOMER

TYCO-STANDARD

TOLERANCE UNLESS SPECIFIED OTHERWISE  
 O.X = +/-  
 O.XX = +/-  
 O.XXX = +/-  
 ANGLES = +/-



DO NOT SCALE THIS DRAWING

CHANGES

REV.	DATE	CO	APP.
A	08-10-06	RELEASE	WM
			B.T.

ELECTRICAL CHARACTERISTICS: (ALL DATA APPLIES @ 23°C UNLESS OTHERWISE SPECIFIED)

COIL DATA:

NOMINAL VOLTAGE: 6 VDC  
 OPERATE VOLTAGE: 3.9 VDC MAXIMUM  
 RELEASE VOLTAGE: 0.6 VDC MINIMUM  
 COIL RESISTANCE: 22.5 OHMS +/- 10%  
 OPERATE TIME: 8 mSEC. MAXIMUM EXCLUDING BOUNCE  
 RELEASE TIME: 5 mSEC. MAXIMUM EXCLUDING BOUNCE  
 TEMPERATURE RANGE: OPERATING -40°C TO +85°C

CONTACT DATA: (CONTACT DATA IS FORMATTED N.O./N.C.)

CONTACT ARRANGEMENT: 1 FORM C (SPDT)  
 CONTACT MATERIAL: AgSnO (SILVER TIN-OXIDE)  
 CONTACT MILLIVOLT DROP: 200mv @ 35A ON N.O. CONTACTS (AFTER SWITCHING)  
 250mv @ 20A ON N.C. CONTACTS (AFTER SWITCHING)  
 MAXIMUM MAKE CURRENT: 90A/30A (LAMP) @ 16 VDC  
 MAXIMUM BREAK CURRENT: 40A/30A @ 16 VDC RESISTIVE  
 MAXIMUM CONTINUOUS CURRENT: 40A/30A @ 23°C, 35A/20A @ 85°C  
 INITIAL BREAKDOWN CURRENT: 500V RMS CONTACTS TO COIL

EXPECTED LIFE:

100,000 OPERATIONS, 40 A, 14 VDC RESISTIVE ON NORMALLY OPEN CONTACT

MECHANICAL CHARACTERISTICS:

EXPECTED LIFE: 10 MILLION OPERATIONS, NO CONTACT LOAD  
 TERMINALS: BRASS, UNPLATED

TOLERANCE  
UNLESS  
SPECIFIED  
OTHERWISE

0.X = +/-  
0.XX = +/-  
0.XXX = +/-  
ANGLES = +/-



REV A

DO NOT SCALE THIS DRAWING

MILLIMETERS

CUSTOMER DATA

PART NO.

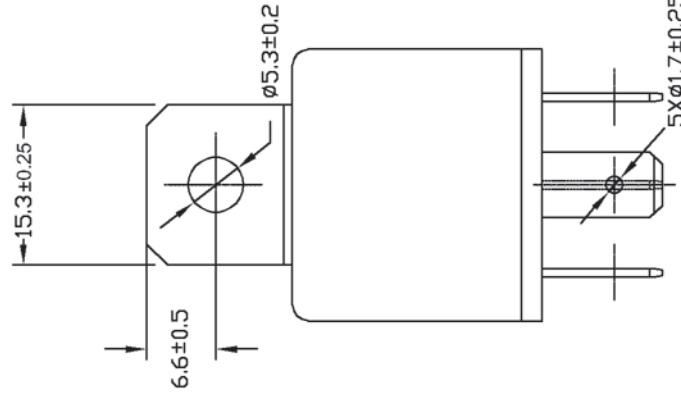
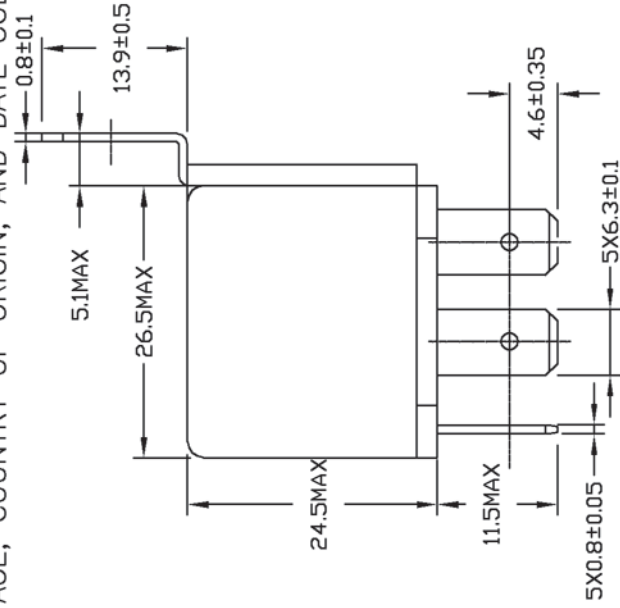
1432873-1

SHT. 2

OF 2

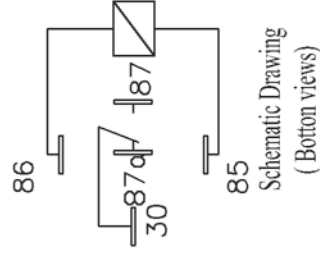
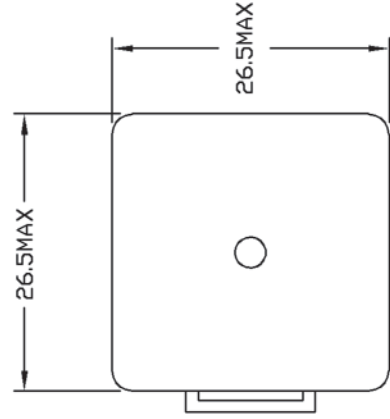
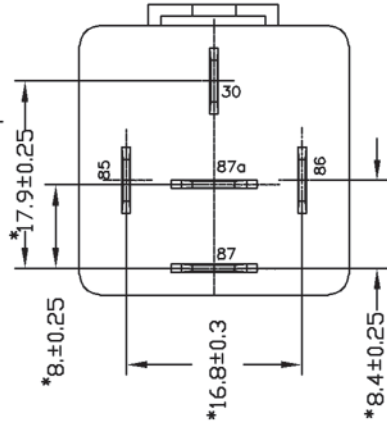
MARKING TO INCLUDE:

TYCO NAME, TYCO PART NUMBER, SCHEMATIC,  
COIL VOLTAGE, COUNTRY OF ORIGIN, AND DATE CODE



\* TERMINAL LOCATIONS  
APPLY AT THE BASE  
OF THE TERMINALS

K Aspect



Schematic Drawing  
(Bottom views)